

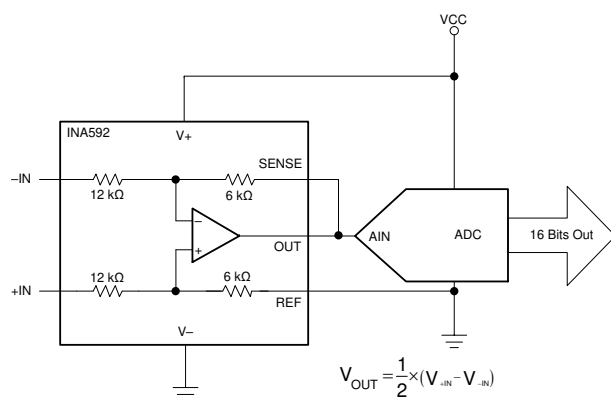
INA592 High-Precision, Wide-Bandwidth e-trim™ Difference Amplifier

1 Features

- G = 1/2 amplifier
- G = 2 amplifier
- Low offset voltage: 40 μV (maximum)
- Low offset voltage drift: $\pm 2 \mu\text{V}/^\circ\text{C}$ (maximum)
- Low noise: 18 $\text{nV}/\sqrt{\text{Hz}}$ at 1 kHz
- Low gain error: $\pm 0.03\%$ (maximum)
- High common-mode rejection: 88 dB (minimum)
- Wide bandwidth: 2 MHz GBW
- Low quiescent current: 1.1 mA per amplifier
- High slew rate: 18 $\text{V}/\mu\text{s}$
- High capacitive load drive capability: 500 pF
- Wide supply range:
 - Single supply: 4.5 V to 36 V
 - Dual supply: $\pm 2.25 \text{ V}$ to $\pm 18 \text{ V}$
- Specified temperature range: -40°C to $+125^\circ\text{C}$
- Packages: 8-Pin MSOP and SOIC, 10-pin VSON

2 Applications

- [AC drive position feedback](#)
- [Servo drive position feedback](#)
- [Condition monitoring module \(voltage, current\)](#)
- [Power supply module](#)
- [Semiconductor test](#)



INA592D/DGK in a Differential Input Data Acquisition Application

3 Description

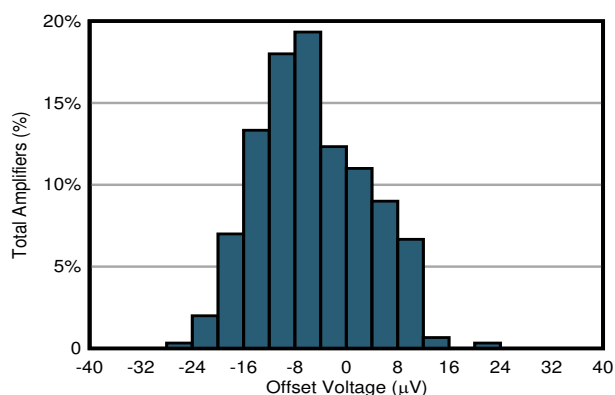
The INA592 device is a low-power, wide bandwidth difference amplifier consisting of a precision operational amplifier (op amp) and a precision resistor network. Excellent tracking of resistors (TCR) maintains gain accuracy and common-mode rejection over temperature. Unique features such as low offset 40 μV (maximum), low offset drift (2 $\mu\text{V}/^\circ\text{C}$ maximum) high slew rate (18 $\text{V}/\mu\text{s}$), and high capacitive load drive of up to 500 pF make the INA592 a robust, high-performance difference amplifier for high-voltage industrial applications. The common-mode range of the internal op amp extends to the negative supply, enabling the device to operate in single-supply applications. The device operates on single (4.5 V to 36 V) or dual supplies ($\pm 2.25 \text{ V}$ to $\pm 18 \text{ V}$).

The difference amplifier is the foundation of many commonly used circuits. The INA592 provides this circuit function without using an expensive precision resistor network.

Device Information

PART NUMBER	PACKAGE ⁽¹⁾	BODY SIZE (NOM)
INA592	SOIC (8)	4.90 mm × 3.91 mm
	VSSOP (8)	3.00 mm × 3.00 mm
	VSON (10)	3.00 mm × 3.00 mm

- (1) For all available packages, see the package option addendum at the end of the data sheet.



Typical Distribution of Offset Voltage (RTO)
G = 1/2, V_S = $\pm 18 \text{ V}$



Table of Contents

1 Features	1	8.4 Device Functional Modes.....	23
2 Applications	1	9 Application and Implementation	24
3 Description	1	9.1 Application Information.....	24
4 Revision History	2	9.2 Typical Applications.....	24
5 Device Comparison Table	3	10 Power Supply Recommendations	31
6 Pin Configuration and Functions	3	11 Layout	31
7 Specifications	4	11.1 Layout Guidelines.....	31
7.1 Absolute Maximum Ratings	4	11.2 Layout Example.....	32
7.2 ESD Ratings	4	12 Device and Documentation Support	34
7.3 Recommended Operating Conditions	4	12.1 Documentation Support.....	34
7.4 Thermal Information	4	12.2 Receiving Notification of Documentation Updates.....	34
7.5 Electrical Characteristics: G = 1/2	5	12.3 Support Resources.....	34
7.6 Electrical Characteristics: G = 2	6	12.4 Trademarks.....	34
7.7 Typical Characteristics.....	8	12.5 Electrostatic Discharge Caution.....	34
8 Detailed Description	23	12.6 Glossary.....	34
8.1 Overview.....	23	13 Mechanical, Packaging, and Orderable Information	34
8.2 Functional Block Diagram.....	23		
8.3 Feature Description.....	23		

4 Revision History

NOTE: Page numbers for previous revisions may differ from page numbers in the current version.

Changes from Revision E (February 2021) to Revision F (April 2021)	Page
• Changed DRC (VSON-10) package from advanced information (preview) to production data (active).....	1
Changes from Revision D (December 2020) to Revision E (February 2021)	Page
• Changed D (SOIC-8) package from advanced information (preview) to production data (active).....	1
Changes from Revision C (November 2020) to Revision D (December 2020)	Page
• Added DRC (VSON-10) advanced information (preview) package and associated content.....	1
Changes from Revision B (February 2020) to Revision C (November 2020)	Page
• Added D (SOIC-8) advanced information (preview) package and associated content.....	1
• Changed common-mode voltage show correct equation	5
• Added input impedance value for differential and common-mode.....	5
• Changed common-mode voltage show correct equation.....	6
• Added input impedance for differential and common-mode.....	6
• Changed Fig. 6-39, <i>Positive Output Voltage vs Output Current (sourcing) G = 1/2</i> , Y-axis unit from μV to V	8
Changes from Revision A (December 2018) to Revision B (February 2020)	Page
• Changed Figure 79, Pseudoground Generator, output on pin 6 from $(V+) / 2$ to $(V+) / 3$	28
Changes from Revision * (October 2018) to Revision A (December 2018)	Page
• First release of production-data data sheet	1

5 Device Comparison Table

DEVICE	DESCRIPTION	GAIN EQUATION
INA592	High-precision, wide-bandwidth e-trim™ difference amplifier	$G = 0.5 V/V$ or $2 V/V$
INA159	$G = 0.2 V$ differential amplifier for $\pm 10\text{-V}$ to 3-V and 5-V conversion	$G = 0.2 V/V$
INA137	Audio differential line receiver $\pm 6\text{ dB}$ ($G = 1/2$ or 2)	$G = 0.5 V/V$ or $2 V/V$
INA132	Low power, single-supply difference amplifier	$G = 1 V/V$
INA819	$35\text{-}\mu\text{V}$ offset, $0.4\ \mu\text{V}/^\circ\text{C}$ V_{OS} drift, $8\text{-nV}/\sqrt{\text{Hz}}$ noise, low-power, precision instrumentation amplifier	$G = 1 + 50\text{ k}\Omega / R_G$
INA821	$35\text{-}\mu\text{V}$ offset, $0.4\ \mu\text{V}/^\circ\text{C}$ V_{OS} drift, $7\text{-nV}/\sqrt{\text{Hz}}$ noise, high-bandwidth, precision instrumentation amplifier	$G = 1 + 49.4\text{ k}\Omega / R_G$
INA333	$25\text{-}\mu\text{V}$ V_{OS} , $0.1\ \mu\text{V}/^\circ\text{C}$ V_{OS} drift, 1.8-V to 5-V , RRO, $50\text{-}\mu\text{A}$ I_Q , chopper-stabilized INA	$G = 1 + 100\text{ k}\Omega / R_G$
PGA280	20-mV to $\pm 10\text{-V}$ programmable gain IA with 3-V or 5-V differential output; analog supply up to $\pm 18\text{ V}$	Digital programmable
PGA112	Precision programmable gain op amp with SPI	Digital programmable

6 Pin Configuration and Functions

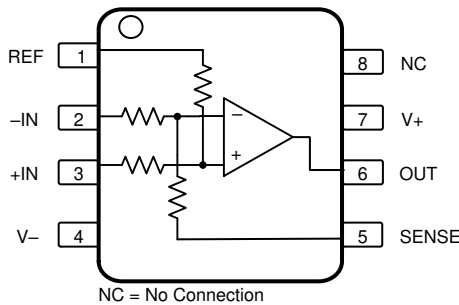


Figure 6-1. D (8-Pin SOIC) and DGK (8-Pin VSSOP) Packages, Top View

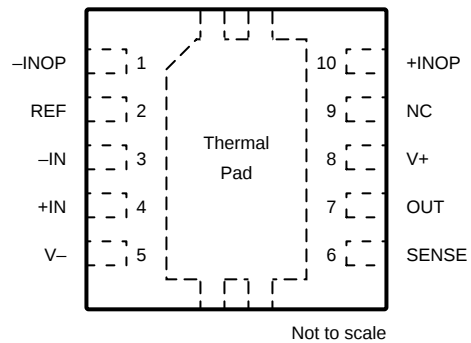


Figure 6-2. DRC (10-Pin VSON With Thermal Pad) Package, Top View

Table 6-1. Pin Functions

NAME	PIN NO.		I/O	DESCRIPTION
	D (SOIC), DGK (VSSOP)	DRC (VSON)		
+IN	3	4	I	12-k Ω resistor to noninverting terminal of op amp. Used as positive input in $G = \frac{1}{2}$ configuration. Used as reference pin in $G = 2$ configuration.
-IN	2	3	I	12-k Ω resistor to inverting terminal of op amp. Used as negative input in $G = \frac{1}{2}$ configuration. Connect to output in $G = 2$ configuration.
+INOP	—	10	I	Direct connection to noninverting terminal of op amp
-INOP	—	1	I	Direct connection to inverting terminal of op amp
NC	8	9	—	No internal connection (can be left floating)
OUT	6	7	O	Output
REF	1	2	I	6-k Ω resistor to noninverting terminal of op amp. Used as reference pin in $G = \frac{1}{2}$ configuration. Used as positive input in $G = 2$ configuration.
SENSE	5	6	I	6-k Ω resistor to inverting terminal of op amp. Connect to output in $G = \frac{1}{2}$ configuration. Used as negative input in $G = 2$ configuration.
V+	7	8	—	Positive (highest) power supply
V-	4	5	—	Negative (lowest) power supply

7 Specifications

7.1 Absolute Maximum Ratings

over operating free-air temperature range (unless otherwise noted)⁽¹⁾

		MIN	MAX	UNIT
V _±	Single supply, (V+) to (V-)		36	V
	Dual supply, (V+) – (V-)		±18	
I _{IN}	Input current		10	mA
I _S	Output short circuit (to ground)	Continuous		
T _A	Operating temperature	-55	125	°C
T _J	Junction temperature	-55	125	°C
T _{stg}	Storage temperature		150	°C

- (1) Stresses beyond those listed under *Absolute Maximum Ratings* may cause permanent damage to the device. These are stress ratings only, which do not imply functional operation of the device at these or any other conditions beyond those indicated under [Section 7.3](#). Exposure to absolute-maximum-rated conditions for extended periods may affect device reliability.

7.2 ESD Ratings

			VALUE	UNIT
V _(ESD)	Electrostatic discharge	Human-body model (HBM), per ANSI/ESDA/JEDEC JS-001 ⁽¹⁾	±500	V
		Charged-device model (CDM), per JEDEC specification JESD22-C101 ⁽²⁾	±1000	

- (1) JEDEC document JEP155 states that 500-V HBM allows safe manufacturing with a standard ESD control process.
 (2) JEDEC document JEP157 states that 250-V CDM allows safe manufacturing with a standard ESD control process.

7.3 Recommended Operating Conditions

over operating free-air temperature range (unless otherwise noted)

			MIN	NOM	MAX	UNIT
V _±	Supply voltage	Single supply, V _S = (V+)	4.5		36	V
		Dual supply, V _S = (V+) – (V-)	±2.25		±18	
T _A	Specified temperature		-40		125	°C

7.4 Thermal Information

THERMAL METRIC ⁽¹⁾		INA592			UNIT
		D	DGK	DRC	
		8 PINS	8 PINS	10 PINS	
R _{θJA}	Junction-to-ambient thermal resistance	115	158	47.4	°C/W
R _{θJC(top)}	Junction-to-case (top) thermal resistance	52.4	48.6	49.6	°C/W
R _{θJB}	Junction-to-board thermal resistance	59.2	78.7	21.0	°C/W
ψ _{JT}	Junction-to-top characterization parameter	9.5	3.9	0.8	°C/W
ψ _{JB}	Junction-to-board characterization parameter	58.3	77.3	20.9	°C/W
R _{θJC(bot)}	Junction-to-case (bottom) thermal resistance	N/A	5.3	5.3	°C/W

- (1) For more information about traditional and new thermal metrics, see the [Semiconductor and IC Package Thermal Metrics](#) application report.

7.5 Electrical Characteristics: G = 1/2

at $T_A = 25^\circ\text{C}$, $V_S = \pm 2.25\text{ V to } \pm 18\text{ V}$, $V_{CM} = V_{OUT} = V_S / 2$, $R_L = 10\text{ k}\Omega$ connected to ground, and REF pin connected to ground (unless otherwise noted)

PARAMETER		TEST CONDITIONS		MIN	TYP	MAX	UNIT
OFFSET VOLTAGE (RTO)⁽¹⁾							
V_{OS}	Input offset voltage	RTO, $V_S = \pm 2.25\text{ V to } \pm 3\text{ V}$, $V_{CM} = -3\text{ V}$			± 14	± 40	μV
		RTO, $V_S = \pm 3\text{ V to } \pm 18\text{ V}$			± 14	± 40	
dV_{OS}/dT	Input offset voltage drift				± 0.7	± 2.0	$\mu\text{V}/^\circ\text{C}$
PSRR	Power-supply rejection ratio	$V_S = \pm 3\text{ V to } \pm 18\text{ V}$			± 0.5	± 5	$\mu\text{V/V}$
INPUT VOLTAGE							
V_{CM}	Common-mode voltage	$V_O = 0\text{ V}$		$3[(V-) - 0.1] - 2V_{REF}$		$3(V+) - 2V_{REF}$	V
CMRR	Common-mode rejection ratio	RTO, $3 [(V-) - 0.1\text{ V}] \leq V_{CM} \leq 3 [(V+) - 3\text{ V}]$	$T_A = -40^\circ\text{C to } +125^\circ\text{C}$	88	100		dB
			$T_A = -40^\circ\text{C to } +125^\circ\text{C}$	82	90		
		RTO, $3 [(V+) - 1.5\text{ V}] \leq V_{CM} \leq 3 [(V+)]$	$T_A = -40^\circ\text{C to } +125^\circ\text{C}$	88	100		
			$T_A = -40^\circ\text{C to } +125^\circ\text{C}$	72	90		
INPUT IMPEDANCE⁽²⁾							
Z_{id}	Differential	$V_O = 0\text{ V}$			24		$\text{k}\Omega$
Z_{ic}	Common-mode				9		$\text{k}\Omega$
GAIN							
G	Initial				1/2		V/V
GE	Gain error	$V_O = -10\text{ V to } +10\text{ V}$, $V_S = \pm 15\text{ V}$			± 0.01	± 0.03	%
	Gain drift ⁽³⁾				± 0.2	± 0.5	$\text{ppm}/^\circ\text{C}$
	Gain nonlinearity	$V_O = -10\text{ V to } +10\text{ V}$, $V_S = \pm 15\text{ V}$			1		ppm
OUTPUT							
V_O	Output voltage swing	Positive rail			$(V+) - 170$	$(V+) - 220$	mV
		Negative rail			$(V-) + 190$	$(V-) + 220$	
I_{sc}	Short-circuit current				± 65		mA
NOISE							
E_n	Output voltage noise	$f = 0.1\text{ Hz to } 10\text{ Hz}$, RTO			3		μVpp
e_n	Output voltage noise density	$f = 1\text{ kHz}$, RTO			18		$\text{nV}/\sqrt{\text{Hz}}$
FREQUENCY RESPONSE							
BW	Small-signal -3 dB- bandwidth				2.0		MHz
SR	Slew rate				18		$\text{V}/\mu\text{s}$
t_s	Settling time	To 0.1% of final value, $V_O = 10\text{-V step}$			1		μs
		To 0.01% of final value, $V_O = 10\text{-V step}$			1.3		
THD+N	Total harmonic distortion + noise	$f = 1\text{ kHz}$, $V_O = 2.8\text{ V}_{RMS}$			0.00038		%
	Noise floor, RTO	80-kHz bandwidth, $V_O = 3.5\text{ V}_{RMS}$			-116		dB
t_{DR}	Overload recovery time				200		ns

7.5 Electrical Characteristics: G = 1/2 (continued)

at $T_A = 25^\circ\text{C}$, $V_S = \pm 2.25\text{ V}$ to $\pm 18\text{ V}$, $V_{CM} = V_{OUT} = V_S / 2$, $R_L = 10\text{ k}\Omega$ connected to ground, and REF pin connected to ground (unless otherwise noted)

PARAMETER		TEST CONDITIONS		MIN	TYP	MAX	UNIT
POWER SUPPLY							
I_Q	Quiescent current	$I_O = 0\text{ mA}$	$T_A = -40^\circ\text{C}$ to $+125^\circ\text{C}$		1.1	1.2	mA
						1.5	mA

- (1) Includes effects of input bias and offset currents of amplifier.
- (2) Resistors are ratio matched but have $\pm 20\%$ absolute value.
- (3) Specified by wafer test to 95% confidence level.

7.6 Electrical Characteristics: G = 2

at $T_A = 25^\circ\text{C}$, $V_S = \pm 2.25\text{ V}$ to $\pm 18\text{ V}$, $V_{CM} = V_{OUT} = V_S / 2$, $R_L = 10\text{ k}\Omega$ connected to ground, and REF pin connected to ground (unless otherwise noted)

PARAMETER		TEST CONDITIONS		MIN	TYP	MAX	UNIT
OFFSET VOLTAGE (RTO)⁽¹⁾							
V_{OS}	Input offset voltage	$V_S = \pm 2.25\text{ V}$ to $\pm 3\text{ V}$, $V_{CM} = -1.5\text{ V}$	$V_S = \pm 3\text{ V}$ to $\pm 18\text{ V}$		± 28	± 80	μV
					± 28	± 80	
dV_{OS}/dT	Input offset voltage drift				± 1.4	± 4	$\mu\text{V}/^\circ\text{C}$
PSRR	Power-supply rejection ratio				± 1	± 5	$\mu\text{V}/\text{V}$
INPUT VOLTAGE							
V_{CM}	Common-mode voltage	$V_O = 0\text{ V}$		$3/2[(V_-) - 0.1] - 0.5V_{REF}$		$3/2(V_+) - 0.5V_{REF}$	V
CMRR	Common-mode rejection ratio	$RTO, 1.5 [(V_-) - 0.1\text{ V}] \leq V_{CM} \leq 1.5 [(V_+) - 3\text{ V}]$	$T_A = -40^\circ\text{C}$ to $+125^\circ\text{C}$		82	94	dB
					80	84	
		$RTO, 1.5 [(V_+) - 1.5\text{ V}] \leq V_{CM} \leq 1.5 (V_+)$	$T_A = -40^\circ\text{C}$ to $+125^\circ\text{C}$		82	94	
					65	84	
INPUT IMPEDANCE⁽²⁾							
Z_{id}	Differential	$V_O = 0\text{ V}$			12		$\text{k}\Omega$
Z_{ic}	Common-mode				9		$\text{k}\Omega$
GAIN							
G	Initial				2		V/V
GE	Gain error	$V_O = -10\text{ V}$ to $+10\text{ V}$, $V_S = \pm 15\text{ V}$			± 0.01	± 0.03	%
	Gain drift ⁽³⁾				± 0.25	± 0.5	ppm/ $^\circ\text{C}$
	Gain nonlinearity	$V_O = -10\text{ V}$ to $+10\text{ V}$, $V_S = \pm 15\text{ V}$			1		ppm
OUTPUT							
V_O	Output voltage swing	Positive rail			$(V_+) - 130$	$(V_+) - 180$	mV
		Negative rail			$(V_-) + 140$	$(V_-) + 180$	
I_{SC}	Short-circuit current				± 65		mA
NOISE							
E_n	Output voltage noise	$f = 0.1\text{ Hz}$ to 10 Hz , RTO			6		μV_{pp}
e_n	Output voltage noise density	$f = 1\text{ kHz}$, RTO			36		$\text{nV}/\sqrt{\text{Hz}}$

7.6 Electrical Characteristics: G = 2 (continued)

at $T_A = 25^\circ\text{C}$, $V_S = \pm 2.25\text{ V}$ to $\pm 18\text{ V}$, $V_{CM} = V_{OUT} = V_S / 2$, $R_L = 10\text{ k}\Omega$ connected to ground, and REF pin connected to ground (unless otherwise noted)

PARAMETER		TEST CONDITIONS	MIN	TYP	MAX	UNIT
FREQUENCY RESPONSE						
BW	Small-signal –3 dB-bandwidth			0.8		MHz
SR	Slew rate			18		V/ μs
t_S	Settling time	To 0.1% of final value, $V_O = 10\text{-V}$ step		1.0		μs
		To 0.01% of final value, $V_O = 10\text{-V}$ step		1.7		
THD+N	Total harmonic distortion + noise	$f = 1\text{ kHz}$, $V_O = 2.8\text{ V}_{RMS}$		0.00066		%
	Noise floor, RTO	80-kHz bandwidth, $V_O = 3.5\text{ V}_{RMS}$		–110		dB
t_{DR}	Overload recovery time			200		ns
POWER SUPPLY						
I_Q	Quiescent current	$I_O = 0\text{ mA}$		1.1	1.2	mA
			$T_A = -40^\circ\text{C}$ to $+125^\circ\text{C}$		1.5	

- (1) Includes effects of input bias and offset currents of amplifier.
- (2) Resistors are ratio matched but have $\pm 20\%$ absolute value.
- (3) Specified by wafer test to 95% confidence level.

7.7 Typical Characteristics

at $T_A = 25^\circ\text{C}$, $V_S = \pm 18\text{ V}$, $V_{CM} = V_{OUT} = V_S / 2$, $R_L = 10\text{ k}\Omega$, REF pin connected to ground, and $G = 1/2$ (unless otherwise noted)

Table 7-1. Table of Graphs

DESCRIPTION	FIGURE
Typical Distribution of Offset Voltage (RTO) $G = 1/2$, $V_S = \pm 2.25\text{ V}$	Figure 7-1
Typical Distribution of Offset Voltage (RTO) $G = 2$, $V_S = \pm 2.25\text{ V}$	Figure 7-2
Typical Distribution of Offset Voltage (RTO) $G = 1/2$, $V_S = \pm 18\text{ V}$	Figure 7-3
Typical Distribution of Offset Voltage (RTO) $G = 2$, $V_S = \pm 18\text{ V}$	Figure 7-4
Typical Distribution of Offset Voltage Drift (RTO) $G = 1/2$	Figure 7-5
Typical Distribution of Offset Voltage Drift (RTO) $G = 2$	Figure 7-6
Output Offset Voltage vs Temperature $G = 1/2$	Figure 7-7
Output Offset Voltage vs Temperature $G = 2$	Figure 7-8
Offset Voltage vs Common-Mode Voltage $G = 1/2$	Figure 7-9
Offset Voltage vs Common-Mode Voltage $G = 2$	Figure 7-10
Input Bias Current vs Temperature $G = 1/2$ and $G = 2$	Figure 7-11
Input Offset Current vs Temperature	Figure 7-12
Input Bias Current vs Common Mode Voltage $G = 1/2$	Figure 7-13
Input Bias Current vs Common Mode Voltage $G = 2$	Figure 7-14
Typical CMRR Distribution $G = 1/2$, $V_S = \pm 2.25\text{ V}$	Figure 7-15
Typical CMRR Distribution $G = 2$, $V_S = \pm 2.25\text{ V}$	Figure 7-16
Typical CMRR Distribution $G = 1/2$, $V_S = \pm 18\text{ V}$	Figure 7-17
Typical CMRR Distribution $G = 2$, $V_S = \pm 18\text{ V}$	Figure 7-18
CMRR vs Temperature $G = 1/2$	Figure 7-19
CMRR vs Temperature $G = 2$	Figure 7-20
Common-Mode Rejection Ratio vs Frequency (RTI) $G = 1/2$ and 2	Figure 7-21
Maximum Output Voltage vs Frequency	Figure 7-22
PSRR vs Temperature $G = 1/2$	Figure 7-23
PSRR vs Temperature $G = 2$	Figure 7-24
PSRR vs Frequency (RTI) $G = 1/2$	Figure 7-25
PSRR vs Frequency (RTI) $G = 2$	Figure 7-26
Typical Distribution of Gain Error $G = 1/2$, $V_S = \pm 2.25\text{ V}$	Figure 7-27
Typical Distribution of Gain Error $G = 2$, $V_S = \pm 2.25\text{ V}$	Figure 7-28
Gain Error vs Temperature $G = 1/2$	Figure 7-29
Gain Error vs Temperature $G = 2$	Figure 7-30
Closed-Loop Gain vs Frequency $G = 1/2$	Figure 7-31
Closed-Loop Gain vs Frequency $G = 2$	Figure 7-32
Voltage Noise Spectral Density vs Frequency (RTI) $G = 1/2$	Figure 7-33
Voltage Noise Spectral Density vs Frequency (RTI) $G = 2$	Figure 7-34
0.1-Hz to 10-Hz RTI Voltage Noise $G = 1/2$	Figure 7-35
0.1-Hz to 10-Hz RTI Voltage Noise $G = 2$	Figure 7-36
Integrated Output Voltage Noise vs Noise Bandwidth $G = 1/2$	Figure 7-37
Integrated Output Voltage Noise vs Noise Bandwidth $G = 2$	Figure 7-38
Positive Output Voltage vs Output Current (sourcing) $G = 1/2$	Figure 7-39
Positive Output Voltage vs Output Current (sourcing) $G = 2$	Figure 7-40
Negative Output Voltage vs Output Current (sinking) $G = 1/2$	Figure 7-41
Negative Output Voltage vs Output Current (sinking) $G = 2$	Figure 7-42

7.7 Typical Characteristics

at $T_A = 25^\circ\text{C}$, $V_S = \pm 18\text{ V}$, $V_{CM} = V_{OUT} = V_S / 2$, $R_L = 10\text{ k}\Omega$, REF pin connected to ground, and $G = 1/2$ (unless otherwise noted)

Table 7-1. Table of Graphs (continued)

DESCRIPTION	FIGURE
Settling Time $G = 1/2$	Figure 7-43
Settling Time $G = 2$	Figure 7-44
Large Signal Step Response $G = 1/2$	Figure 7-45
Large Signal Step Response $G = 2$	Figure 7-46
Slew Rate over Temperature	Figure 7-47
Overload Recovery (Normalized to 0V)	Figure 7-48
Small-Signal Overshoot vs Capacitive Load $G = 1/2$	Figure 7-49
Small-Signal Overshoot vs Capacitive Load $G = 2$	Figure 7-50
Small-Signal Step Response $G = 1/2$	Figure 7-51
Small-Signal Step Response $G = 2$	Figure 7-52
THD+N vs Frequency $G = 1/2$	Figure 7-53
THD+N vs Frequency $G = 2$	Figure 7-54
THD+N Ratio vs Output Amplitude $G = 1/2$	Figure 7-55
THD+N Ratio vs Output Amplitude $G = 2$	Figure 7-56
Supply Current vs Temperature $G = 1/2$	Figure 7-57
Supply Current vs Temperature $G = 2$	Figure 7-58
Supply Current vs Supply Voltage $G = 1/2$	Figure 7-59
Supply Current vs Supply Voltage $G = 2$	Figure 7-60
Short Circuit Current vs Temperature $G = 1/2$	Figure 7-61
Short Circuit Current vs Temperature $G = 2$	Figure 7-62
Differential-Mode EMI Rejection Ratio $G = 1/2$	Figure 7-63
Differential-Mode EMI Rejection Ratio $G = 2$	Figure 7-64
Common-Mode EMI Rejection Ratio $G = 1/2$	Figure 7-65
Common-Mode EMI Rejection Ratio $G = 2$	Figure 7-66
Input Common-Mode Voltage vs Output Voltage $G = 1/2$, Bipolar Supply	Figure 7-67
Input Common-Mode Voltage vs Output Voltage $G = 2$, Bipolar Supply	Figure 7-68
Input Common-Mode Voltage vs Output Voltage $G = 1/2$, 5-V Supply	Figure 7-69
Input Common-Mode Voltage vs Output Voltage $G = 2$, 5-V Supply	Figure 7-70
Input Common-Mode Voltage vs Output Voltage $G = 1/2$, 36-V Supply	Figure 7-71
Input Common-Mode Voltage vs Output Voltage $G = 2$, 36-V Supply	Figure 7-72
Closed-Loop Output Impedance vs Frequency	Figure 7-73

7.7 Typical Characteristics

at $T_A = 25^\circ\text{C}$, $V_S = \pm 18\text{ V}$, $V_{CM} = V_{OUT} = V_S / 2$, $R_L = 10\text{ k}\Omega$, REF pin connected to ground, and $G = 1/2$ (unless otherwise noted)

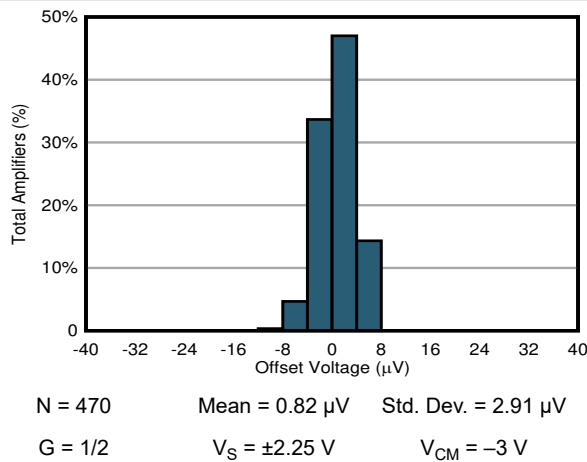


Figure 7-1. Typical Distribution of Offset Voltage (RTO)

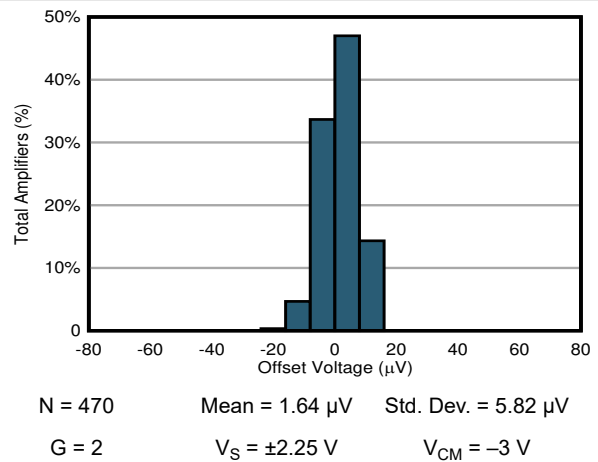


Figure 7-2. Typical Distribution of Offset Voltage (RTO)

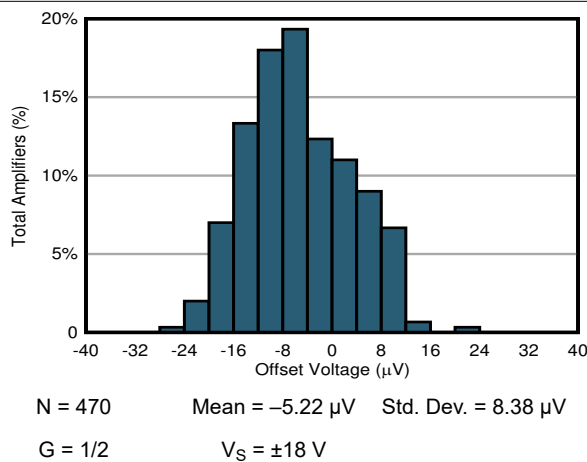


Figure 7-3. Typical Distribution of Offset Voltage (RTO)

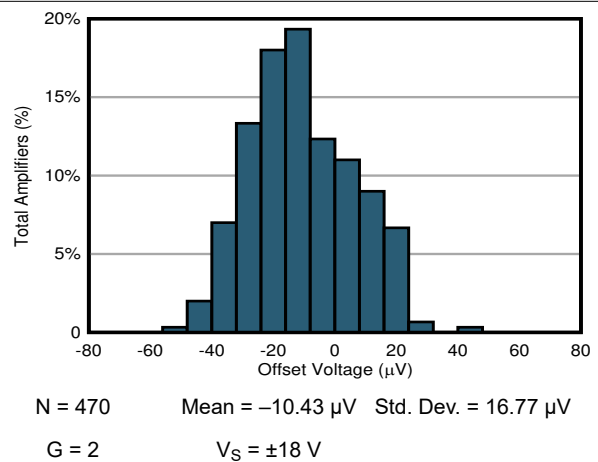


Figure 7-4. Typical Distribution of Offset Voltage (RTO)

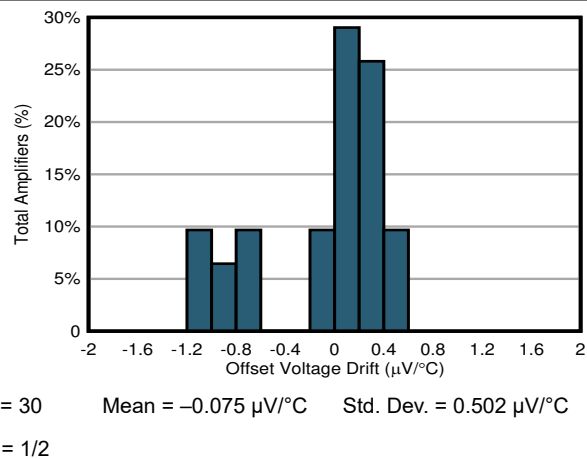


Figure 7-5. Typical Distribution of Offset Voltage Drift (RTO)

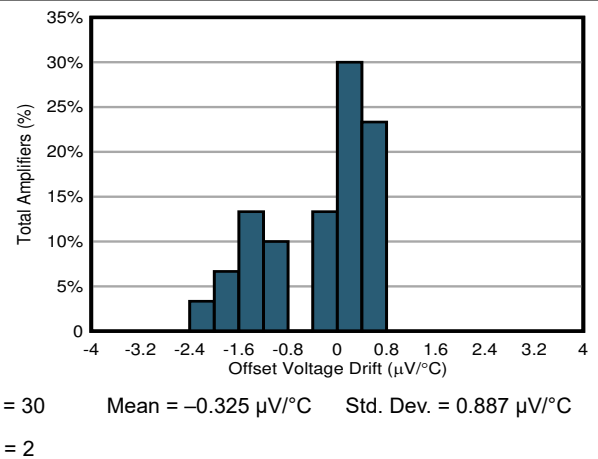


Figure 7-6. Typical Distribution of Offset Voltage Drift (RTO)

7.7 Typical Characteristics (continued)

at $T_A = 25^\circ\text{C}$, $V_S = \pm 18\text{ V}$, $V_{CM} = V_{OUT} = V_S / 2$, $R_L = 10\text{ k}\Omega$, REF pin connected to ground, and $G = 1/2$ (unless otherwise noted)

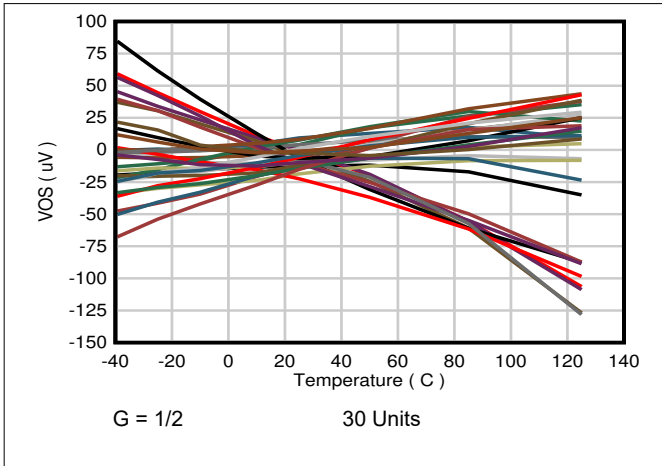


Figure 7-7. Output Offset Voltage vs Temperature

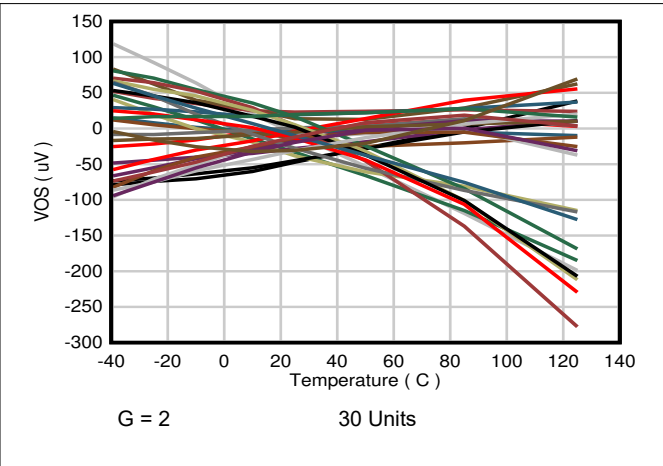


Figure 7-8. Output Offset Voltage vs Temperature

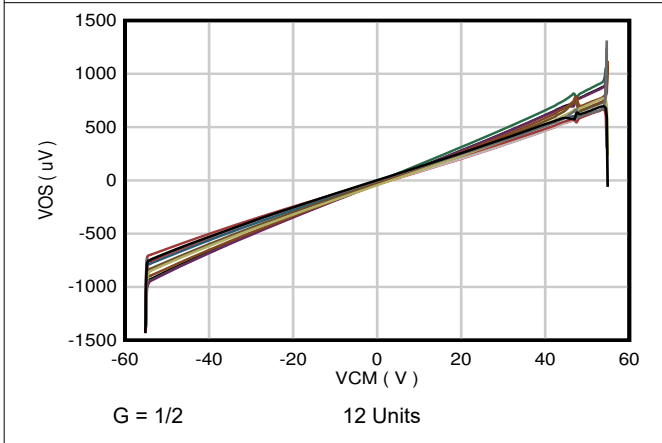


Figure 7-9. Offset Voltage vs Common-Mode Voltage

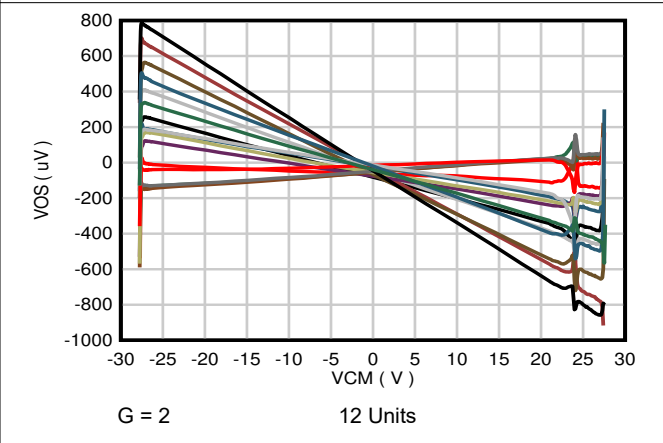
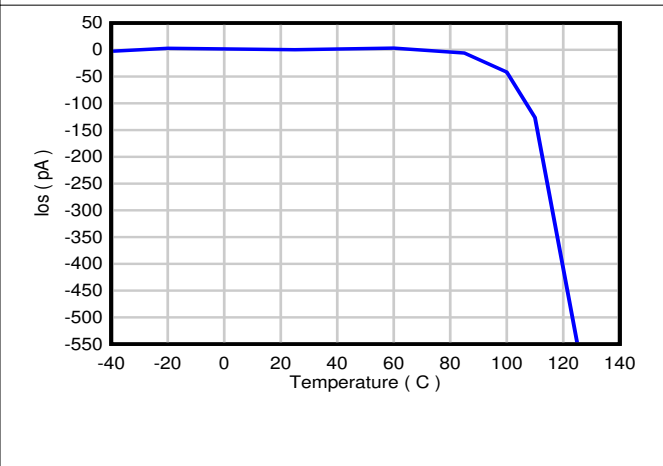
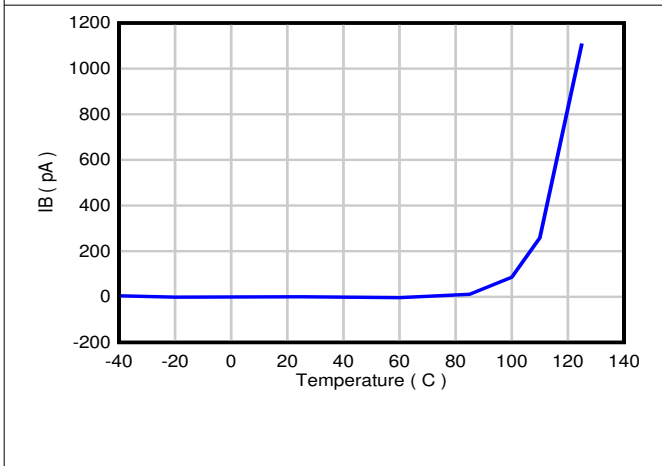


Figure 7-10. Offset Voltage vs Common-Mode Voltage



7.7 Typical Characteristics (continued)

at $T_A = 25^\circ\text{C}$, $V_S = \pm 18\text{ V}$, $V_{CM} = V_{OUT} = V_S / 2$, $R_L = 10\text{ k}\Omega$, REF pin connected to ground, and $G = 1/2$ (unless otherwise noted)

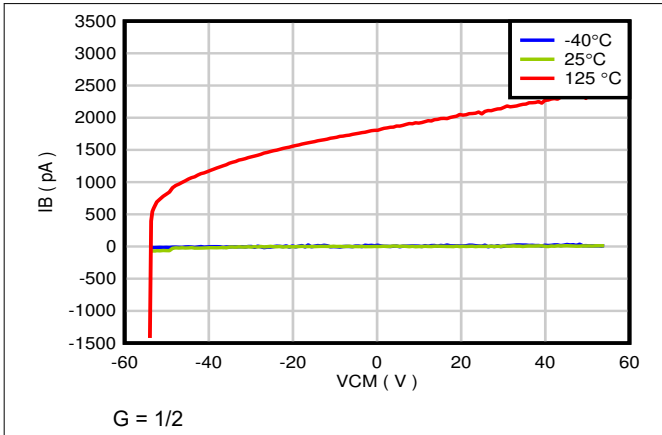


Figure 7-13. Input Bias Current vs Common Mode Voltage

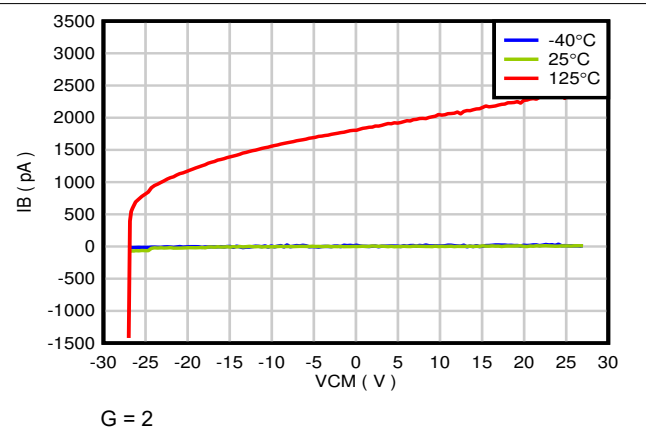


Figure 7-14. Input Bias Current vs Common Mode Voltage

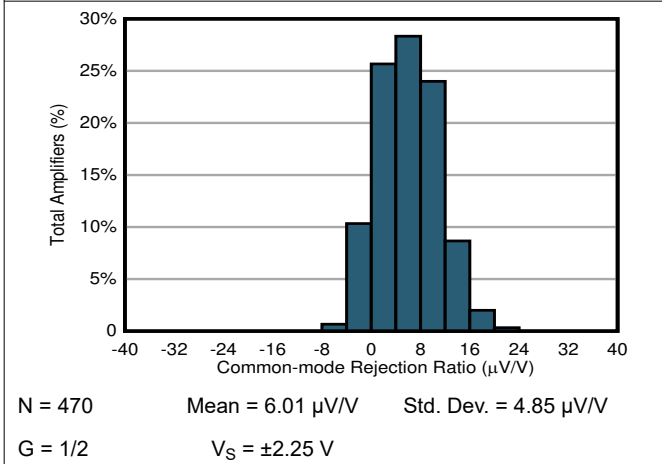


Figure 7-15. Typical CMRR Distribution

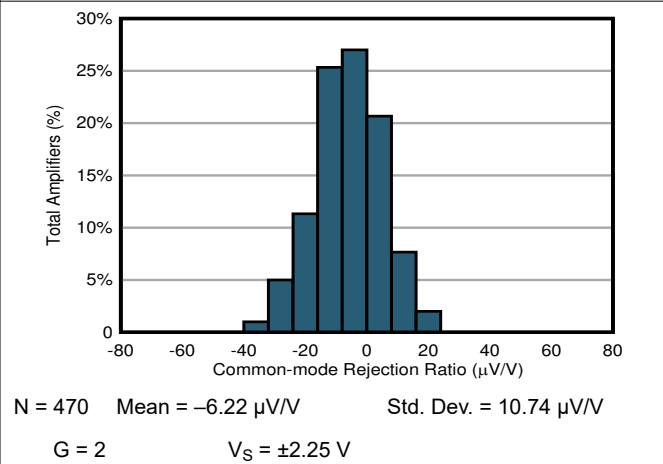


Figure 7-16. Typical CMRR Distribution

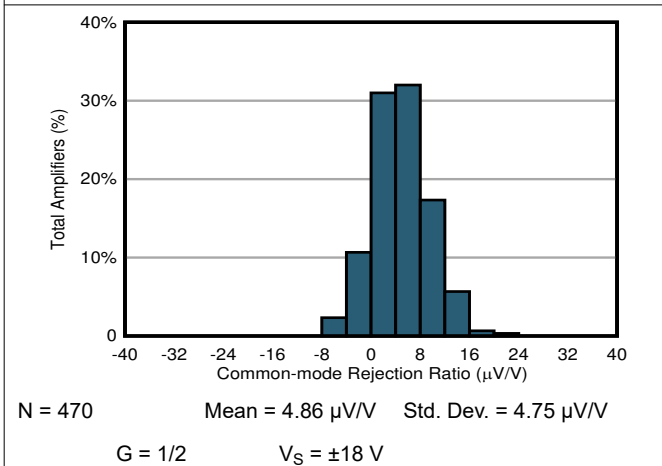


Figure 7-17. Typical CMRR Distribution

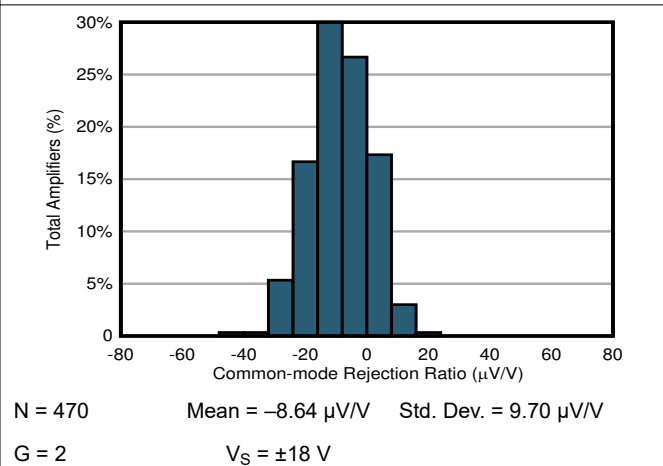


Figure 7-18. Typical CMRR Distribution

7.7 Typical Characteristics (continued)

at $T_A = 25^\circ\text{C}$, $V_S = \pm 18\text{ V}$, $V_{CM} = V_{OUT} = V_S / 2$, $R_L = 10\text{ k}\Omega$, REF pin connected to ground, and $G = 1/2$ (unless otherwise noted)

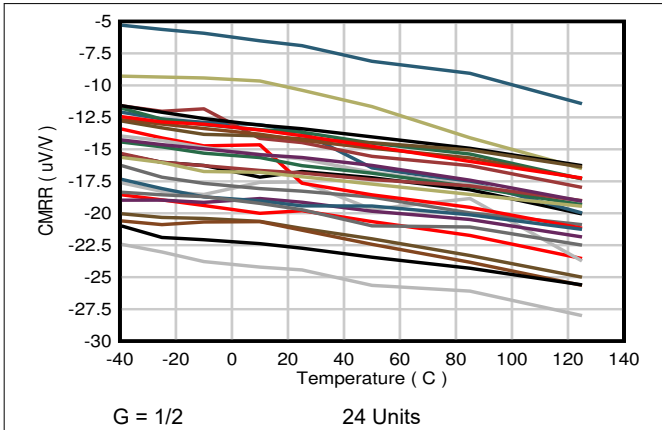


Figure 7-19. CMRR vs Temperature

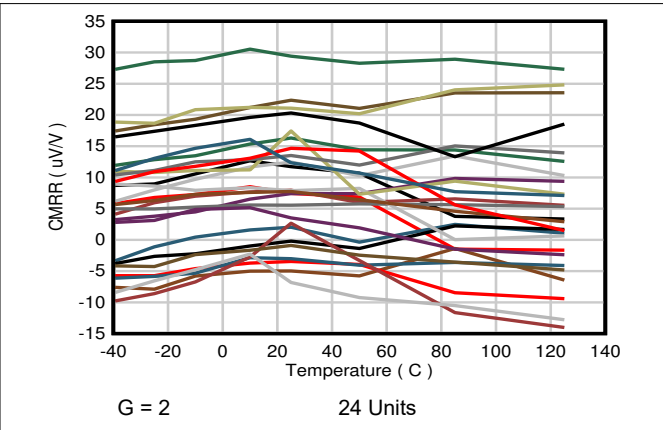


Figure 7-20. CMRR vs Temperature

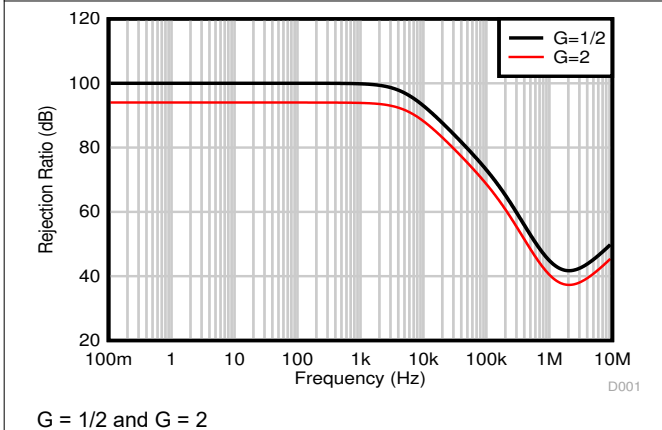


Figure 7-21. Common-Mode Rejection Ratio vs Frequency, Referred to Input

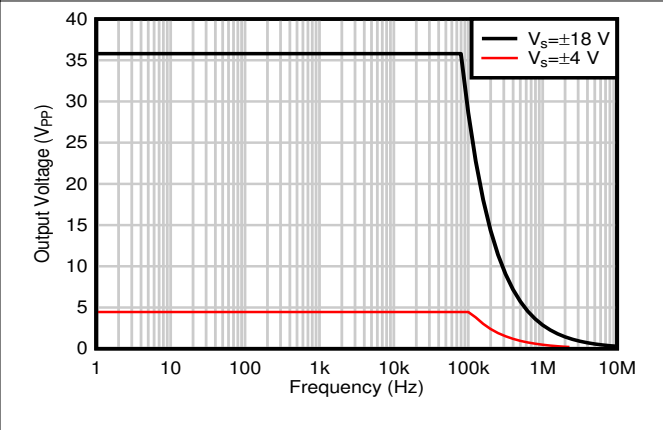


Figure 7-22. Maximum Output Voltage vs Frequency

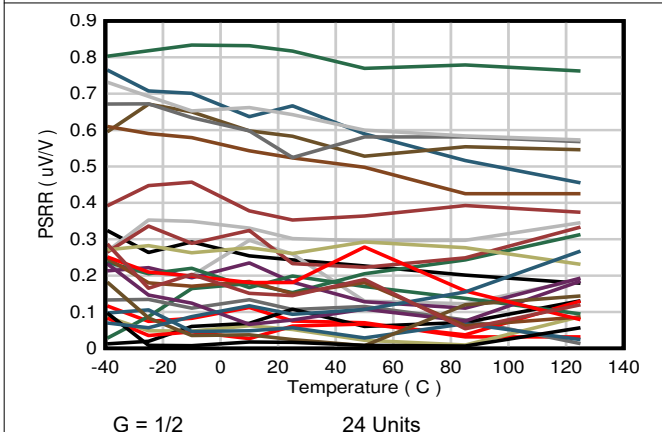


Figure 7-23. PSRR vs Temperature

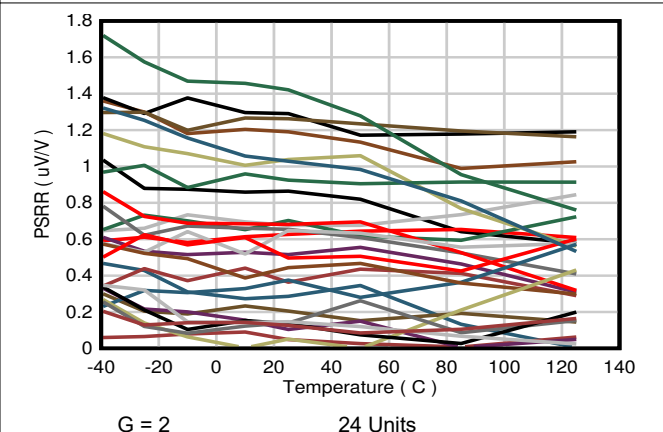


Figure 7-24. PSRR vs Temperature

7.7 Typical Characteristics (continued)

at $T_A = 25^\circ\text{C}$, $V_S = \pm 18\text{ V}$, $V_{CM} = V_{OUT} = V_S / 2$, $R_L = 10\text{ k}\Omega$, REF pin connected to ground, and $G = 1/2$ (unless otherwise noted)

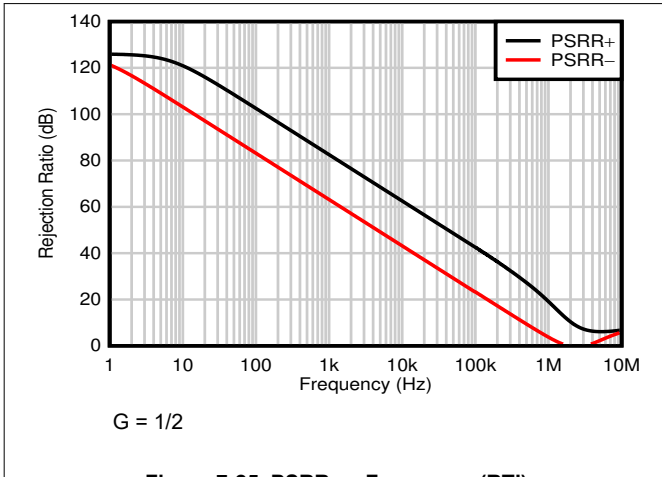


Figure 7-25. PSRR vs Frequency (RTI)

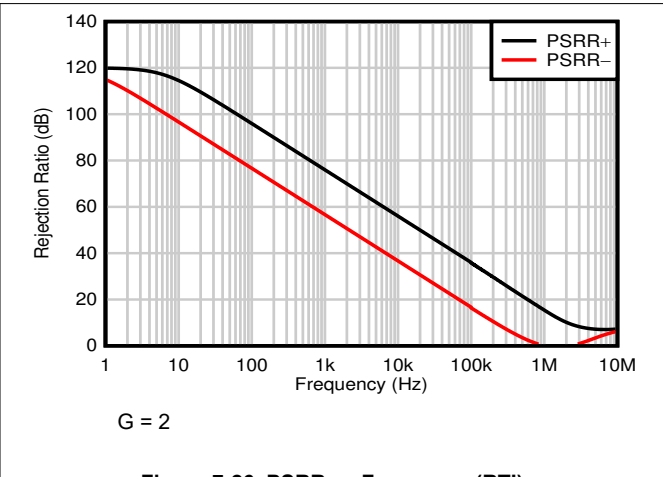


Figure 7-26. PSRR vs Frequency (RTI)

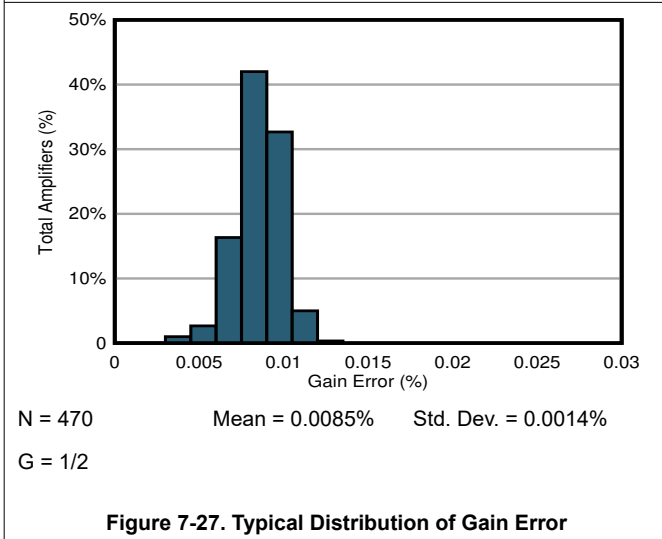


Figure 7-27. Typical Distribution of Gain Error

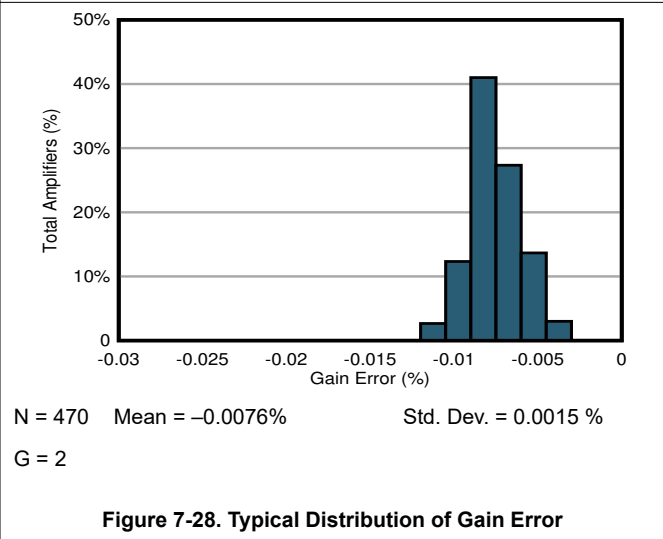


Figure 7-28. Typical Distribution of Gain Error

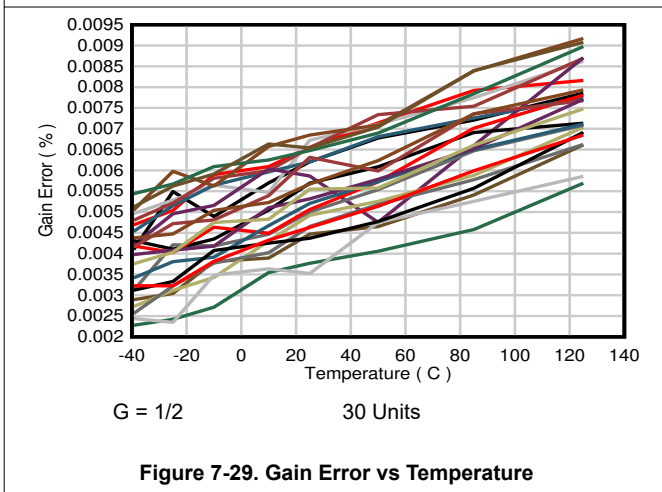


Figure 7-29. Gain Error vs Temperature

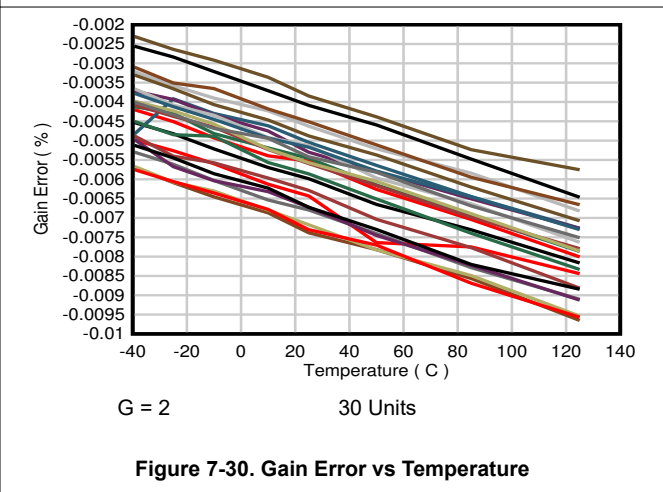


Figure 7-30. Gain Error vs Temperature

7.7 Typical Characteristics (continued)

at $T_A = 25^\circ\text{C}$, $V_S = \pm 18\text{ V}$, $V_{CM} = V_{OUT} = V_S / 2$, $R_L = 10\text{ k}\Omega$, REF pin connected to ground, and $G = 1/2$ (unless otherwise noted)

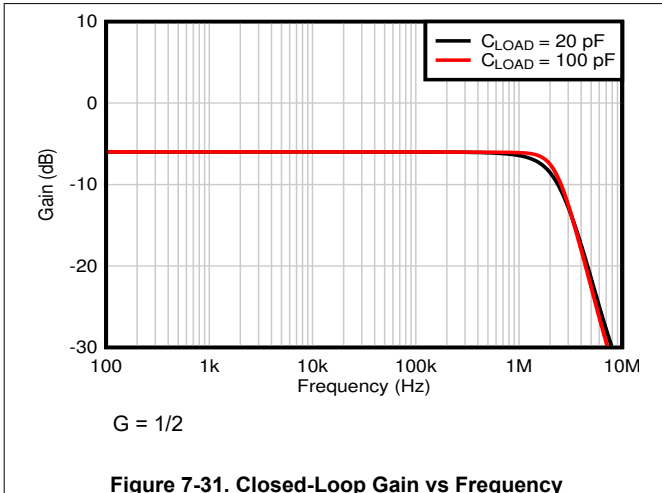


Figure 7-31. Closed-Loop Gain vs Frequency

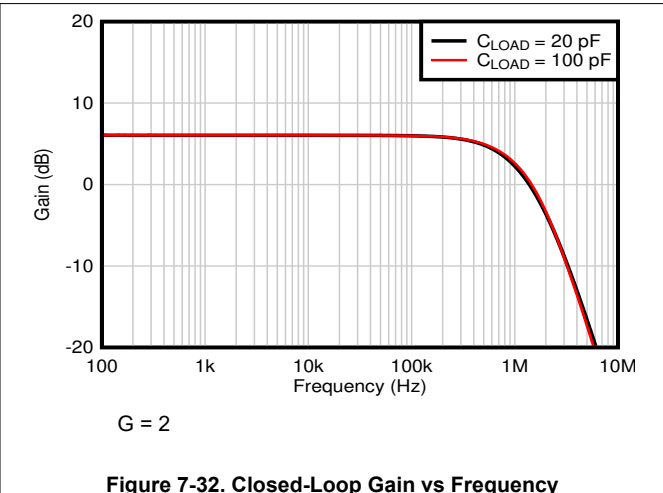


Figure 7-32. Closed-Loop Gain vs Frequency

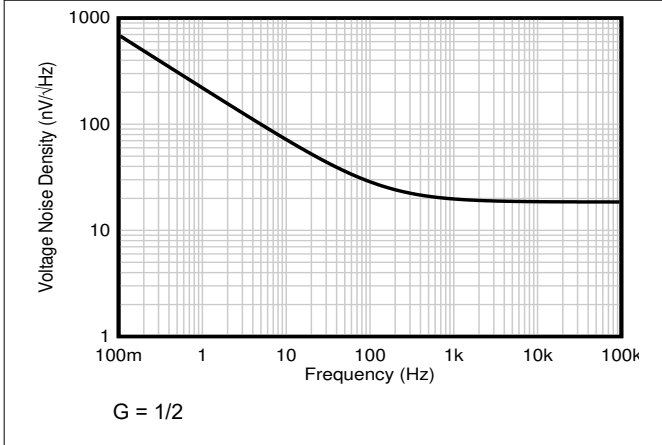


Figure 7-33. Voltage Noise Spectral Density vs Frequency (RTI)

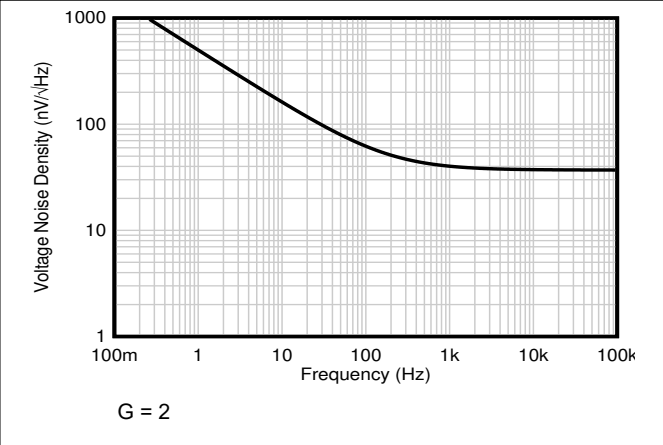


Figure 7-34. Voltage Noise Spectral Density vs Frequency (RTI)

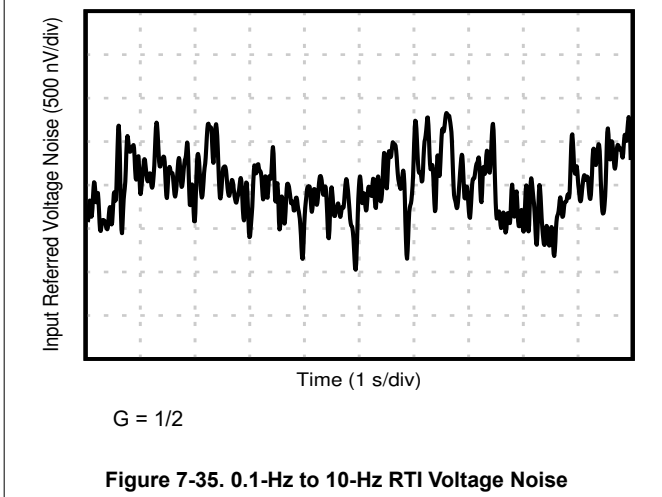


Figure 7-35. 0.1-Hz to 10-Hz RTI Voltage Noise

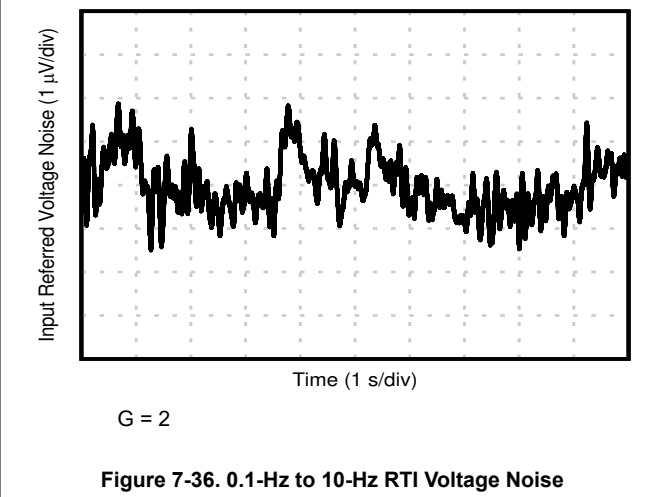


Figure 7-36. 0.1-Hz to 10-Hz RTI Voltage Noise

7.7 Typical Characteristics (continued)

at $T_A = 25^\circ\text{C}$, $V_S = \pm 18\text{ V}$, $V_{CM} = V_{OUT} = V_S / 2$, $R_L = 10\text{ k}\Omega$, REF pin connected to ground, and $G = 1/2$ (unless otherwise noted)

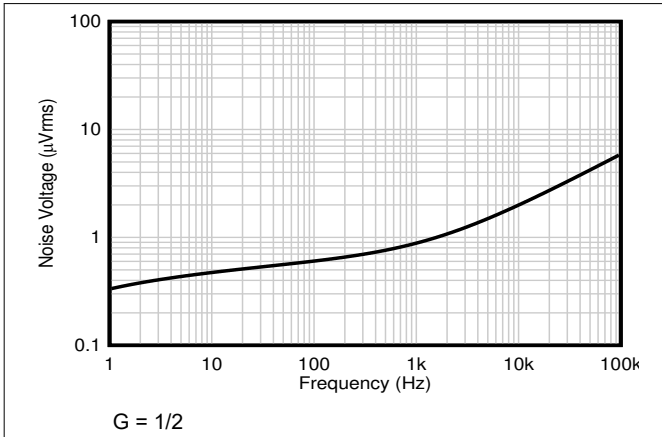


Figure 7-37. Integrated Output Voltage Noise vs Noise Bandwidth

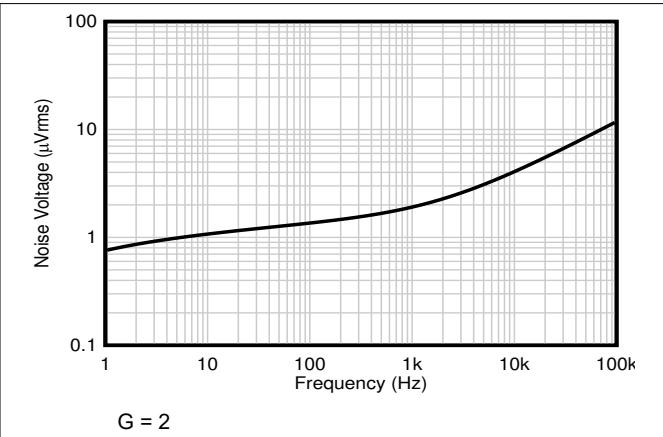


Figure 7-38. Integrated Output Voltage Noise vs Noise Bandwidth

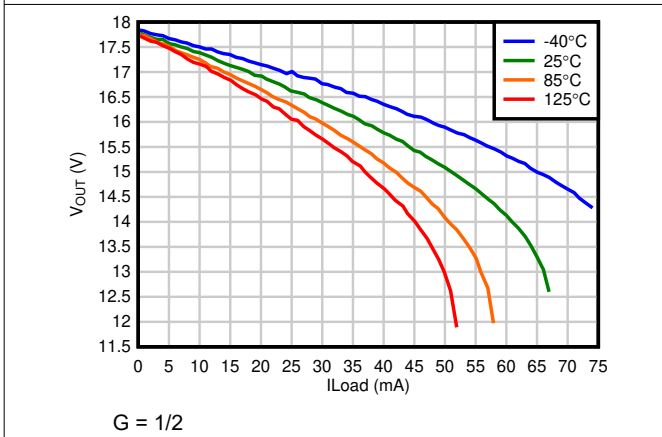


Figure 7-39. Positive Output Voltage vs Output Current (Sourcing)

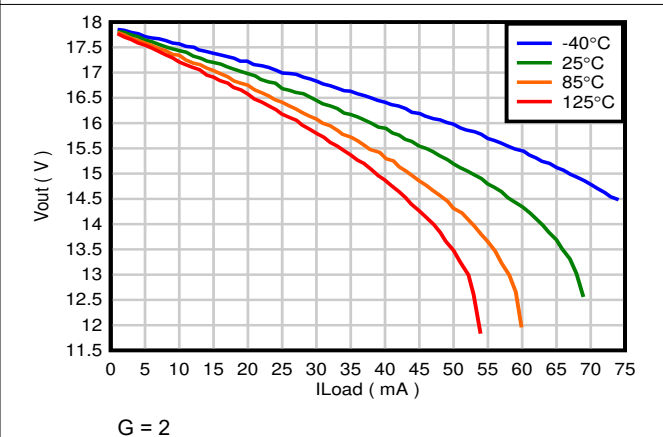


Figure 7-40. Positive Output Voltage vs Output Current (Sourcing)

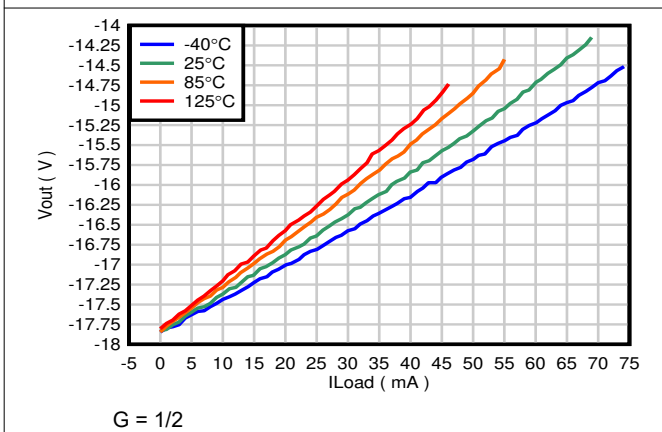


Figure 7-41. Negative Output Voltage vs Output Current (Sinking)

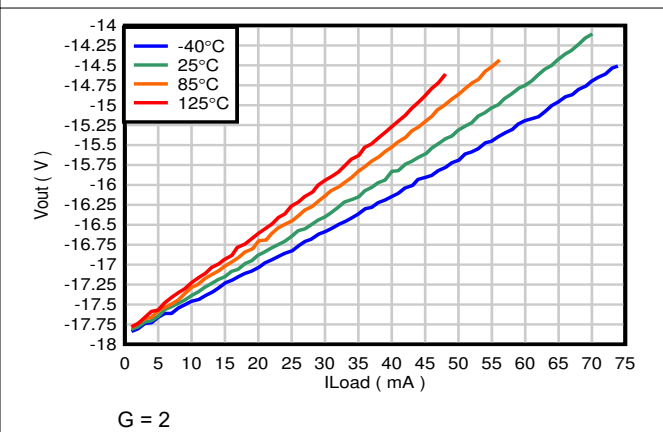
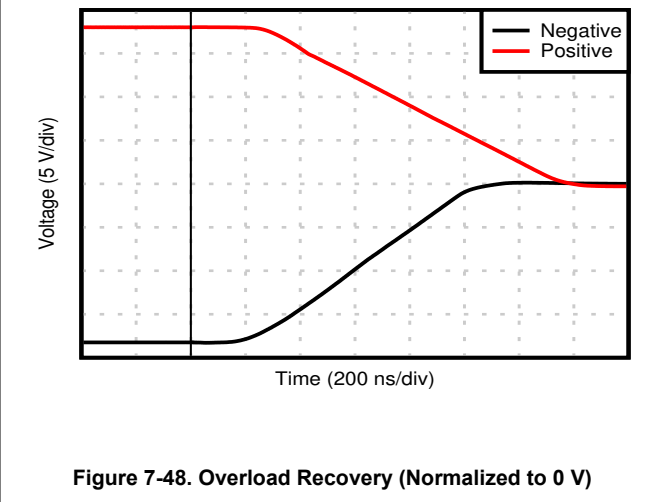
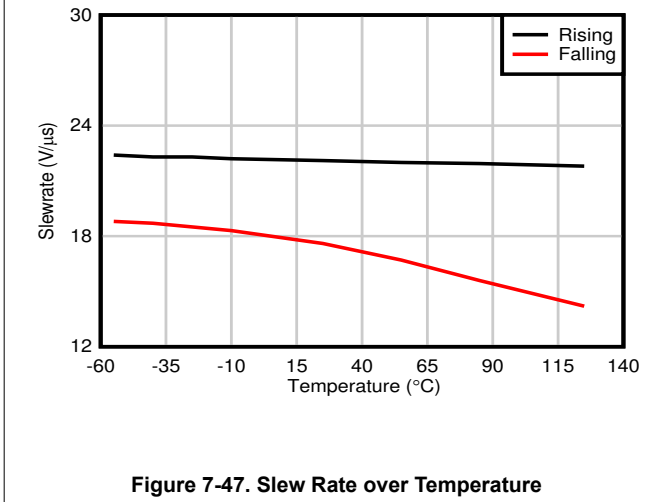
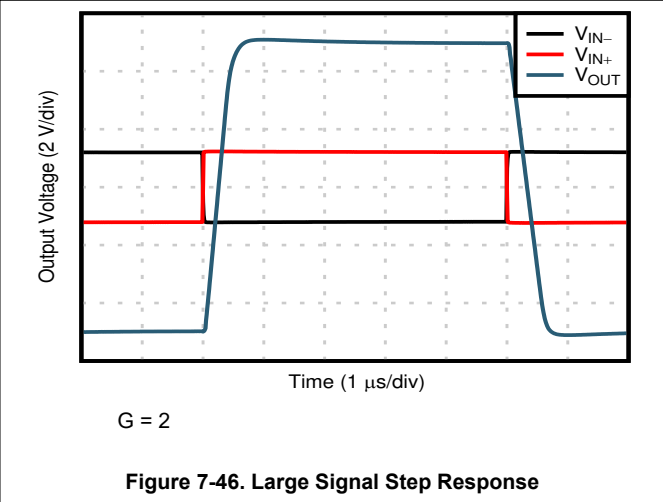
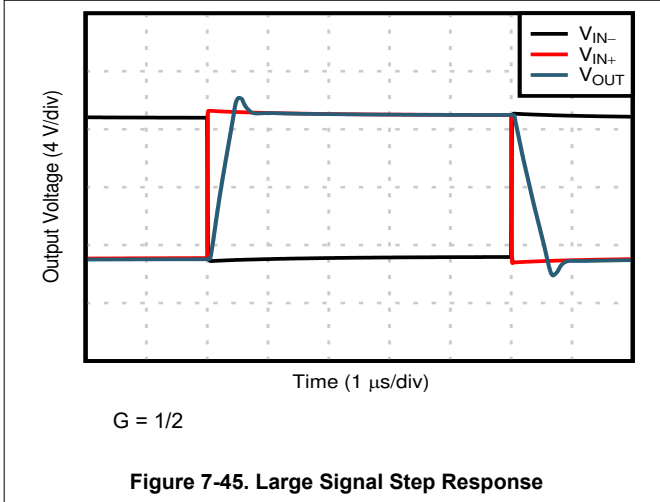
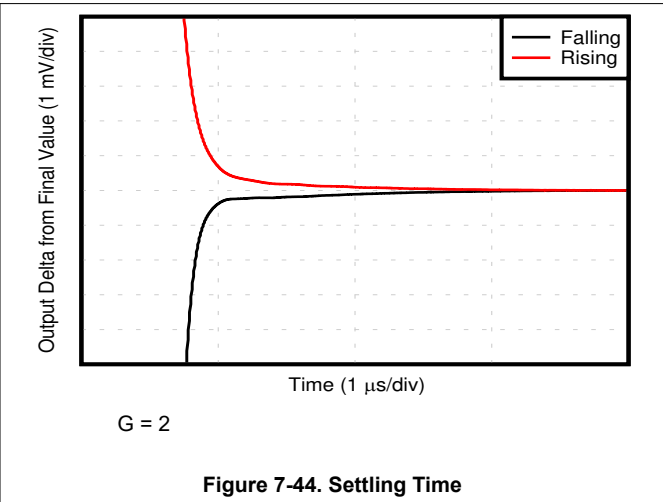
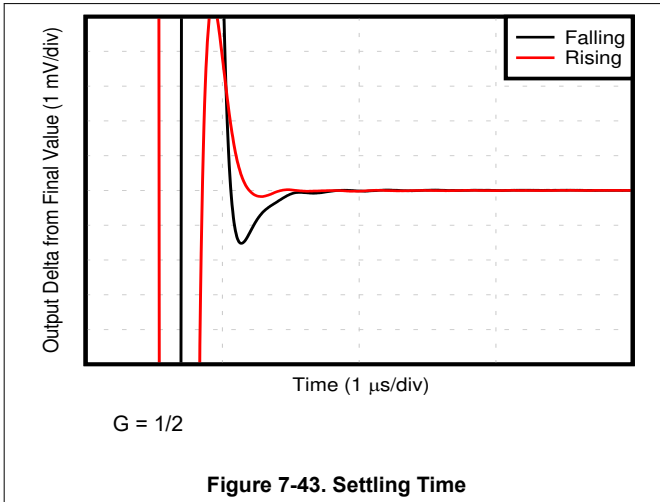


Figure 7-42. Negative Output Voltage vs Output Current (Sinking)

7.7 Typical Characteristics (continued)

at $T_A = 25^\circ\text{C}$, $V_S = \pm 18\text{ V}$, $V_{CM} = V_{OUT} = V_S / 2$, $R_L = 10\text{ k}\Omega$, REF pin connected to ground, and $G = 1/2$ (unless otherwise noted)



7.7 Typical Characteristics (continued)

at $T_A = 25^\circ\text{C}$, $V_S = \pm 18\text{ V}$, $V_{CM} = V_{OUT} = V_S / 2$, $R_L = 10\text{ k}\Omega$, REF pin connected to ground, and $G = 1/2$ (unless otherwise noted)

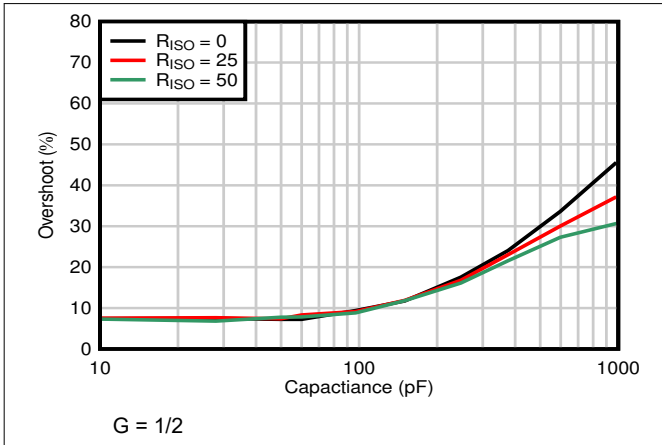


Figure 7-49. Small-Signal Overshoot vs Capacitive Load

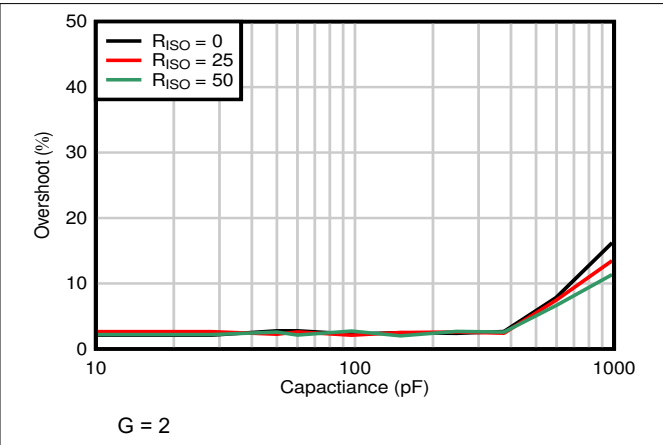


Figure 7-50. Small-Signal Overshoot vs Capacitive Load

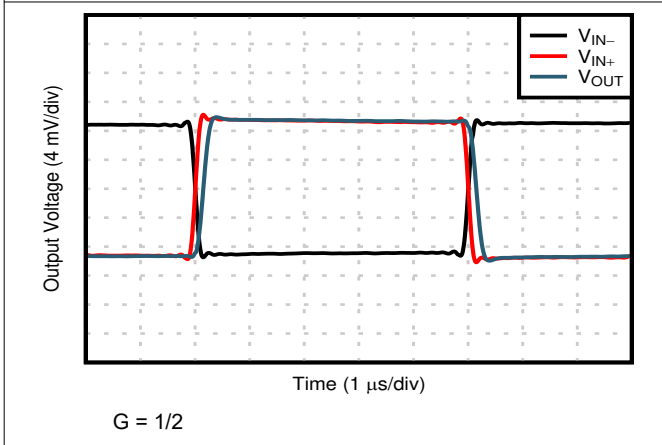


Figure 7-51. Small-Signal Step Response

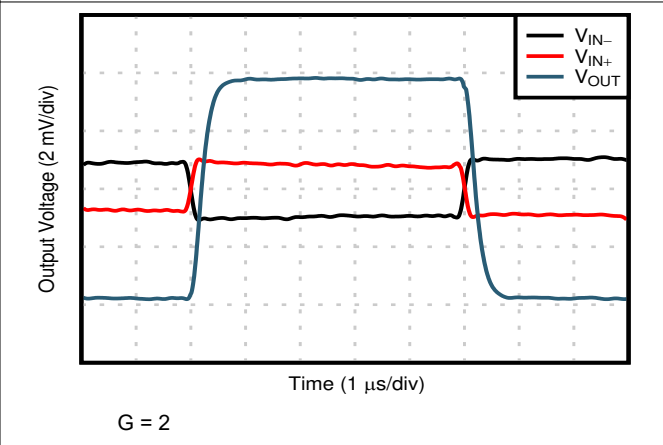


Figure 7-52. Small-Signal Step Response

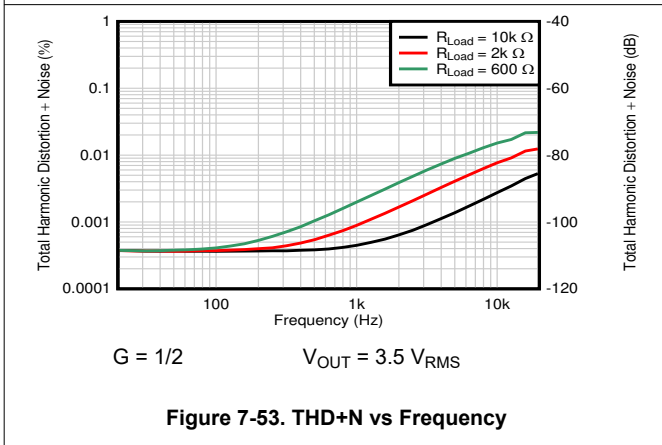


Figure 7-53. THD+N vs Frequency

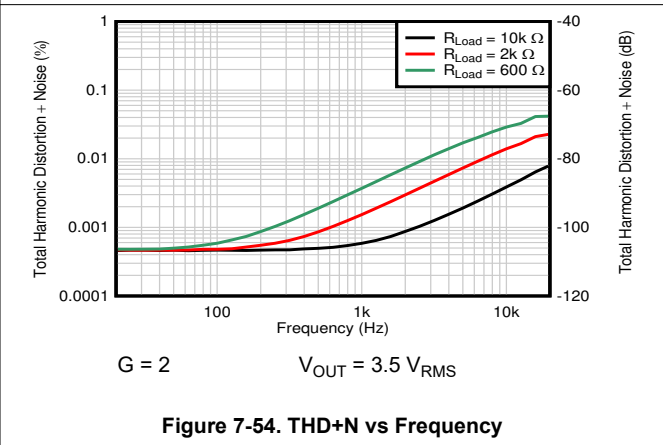
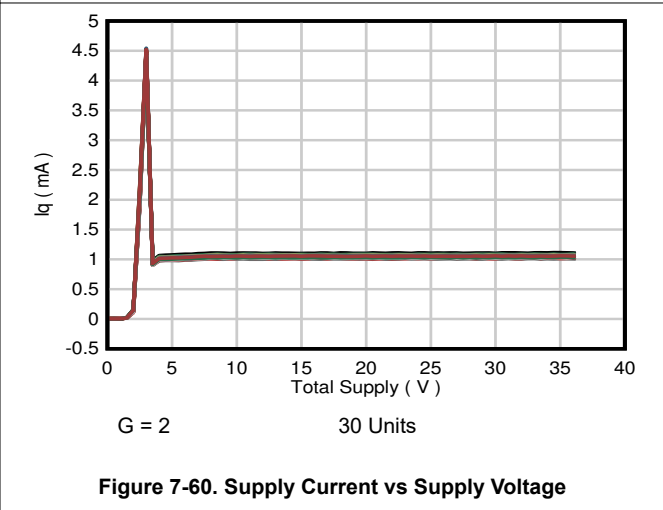
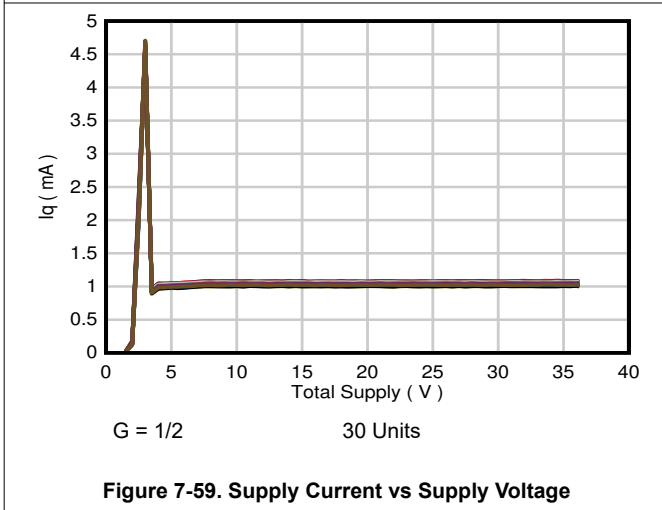
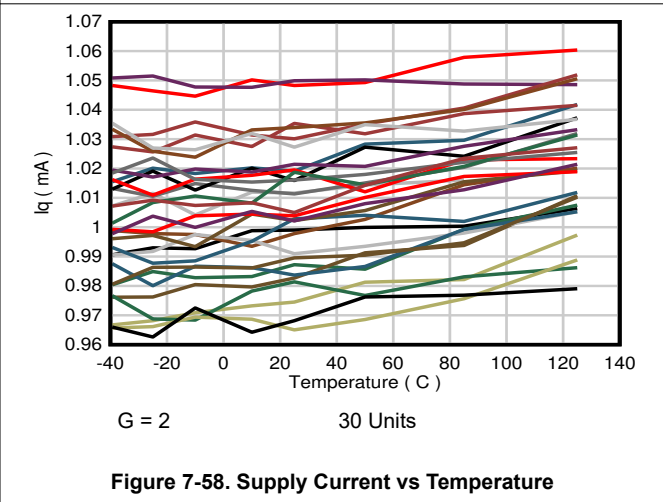
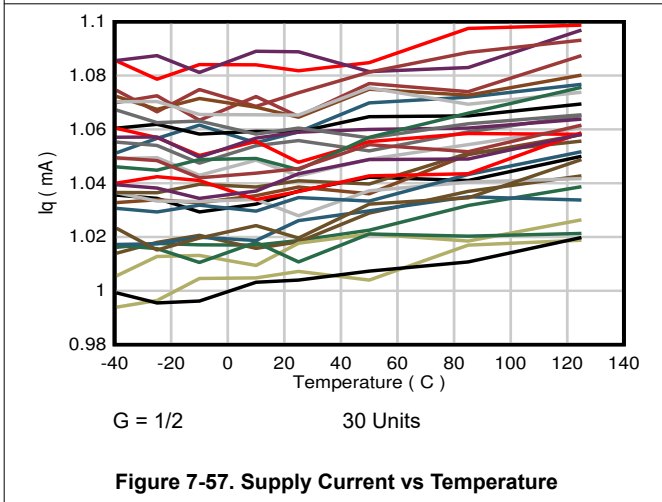
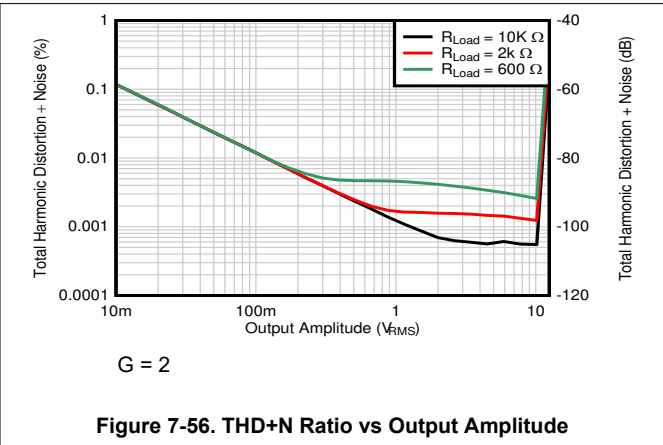
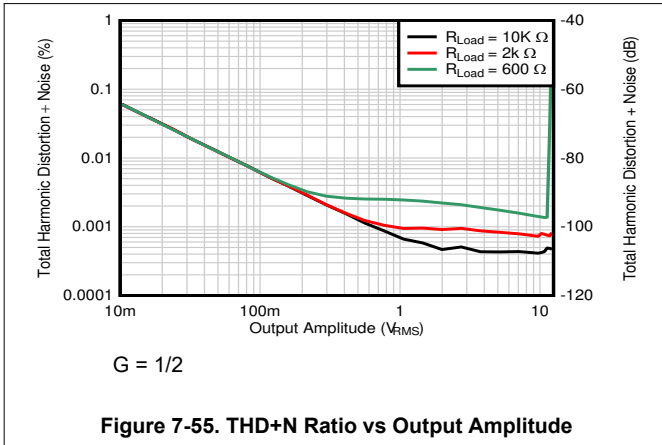


Figure 7-54. THD+N vs Frequency

7.7 Typical Characteristics (continued)

at $T_A = 25^\circ\text{C}$, $V_S = \pm 18\text{ V}$, $V_{CM} = V_{OUT} = V_S / 2$, $R_L = 10\text{ k}\Omega$, REF pin connected to ground, and $G = 1/2$ (unless otherwise noted)



7.7 Typical Characteristics (continued)

at $T_A = 25^\circ\text{C}$, $V_S = \pm 18\text{ V}$, $V_{CM} = V_{OUT} = V_S / 2$, $R_L = 10\text{ k}\Omega$, REF pin connected to ground, and $G = 1/2$ (unless otherwise noted)

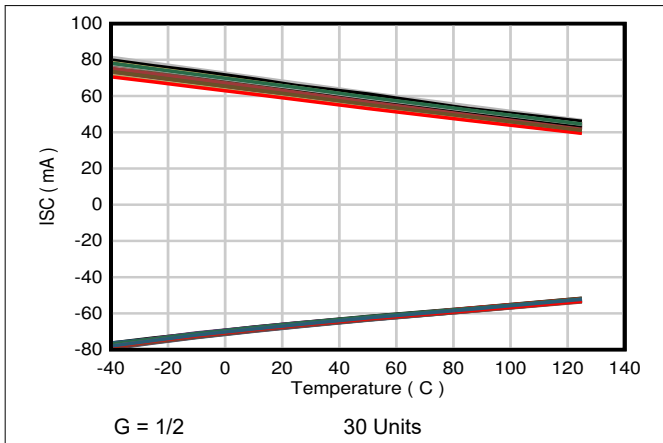


Figure 7-61. Short Circuit Current vs Temperature

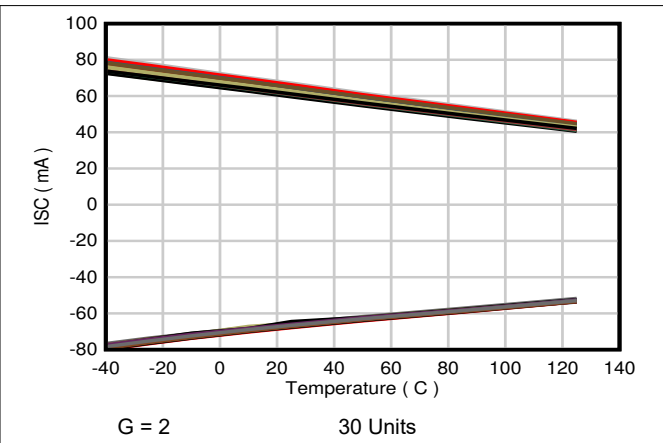


Figure 7-62. Short Circuit Current vs Temperature

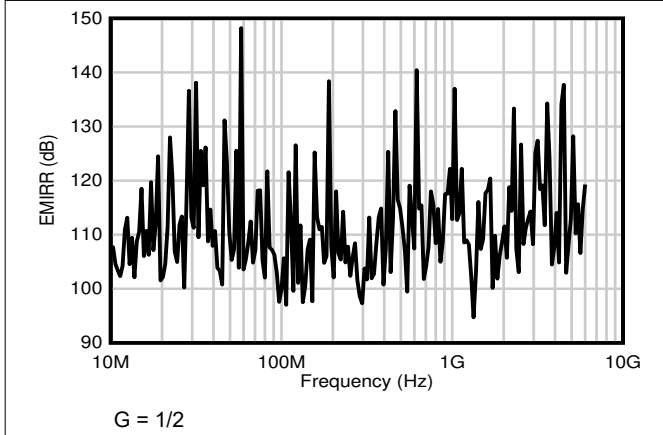


Figure 7-63. Differential-Mode EMI Rejection Ratio

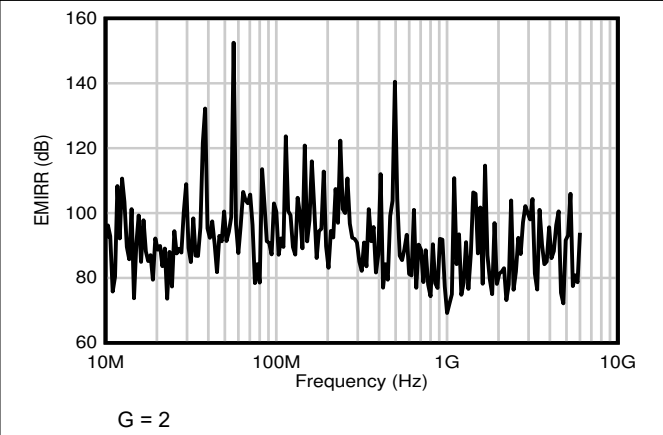


Figure 7-64. Differential-Mode EMI Rejection Ratio

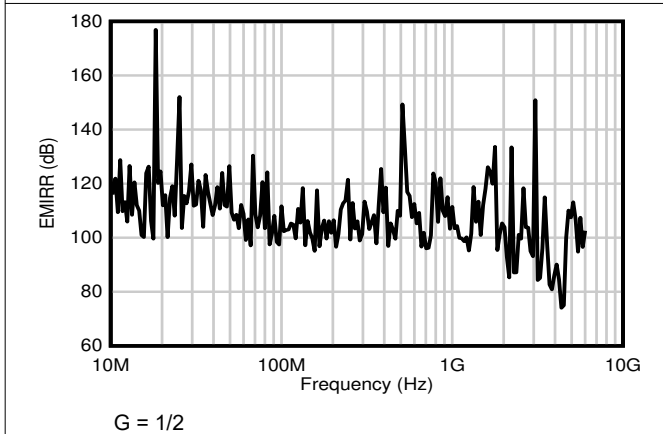


Figure 7-65. Common-Mode EMI Rejection Ratio

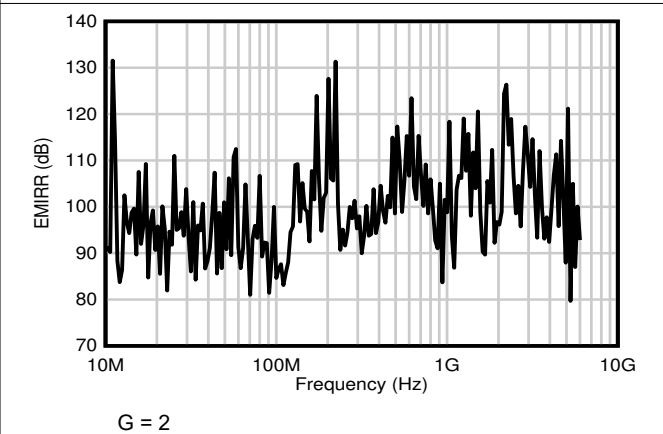


Figure 7-66. Common-Mode EMI Rejection Ratio

7.7 Typical Characteristics (continued)

at $T_A = 25^\circ\text{C}$, $V_S = \pm 18\text{ V}$, $V_{CM} = V_{OUT} = V_S / 2$, $R_L = 10\text{ k}\Omega$, REF pin connected to ground, and $G = 1/2$ (unless otherwise noted)

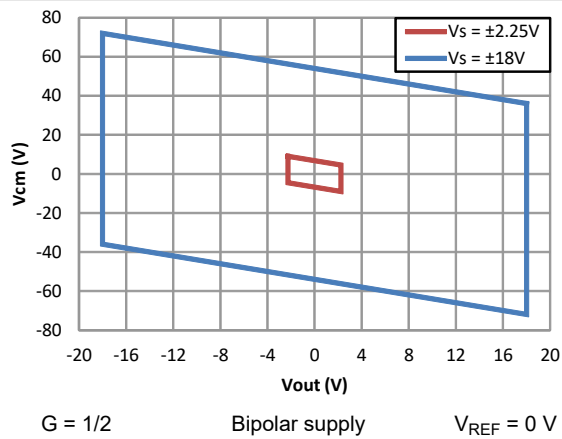


Figure 7-67. Input Common-Mode Voltage vs Output Voltage

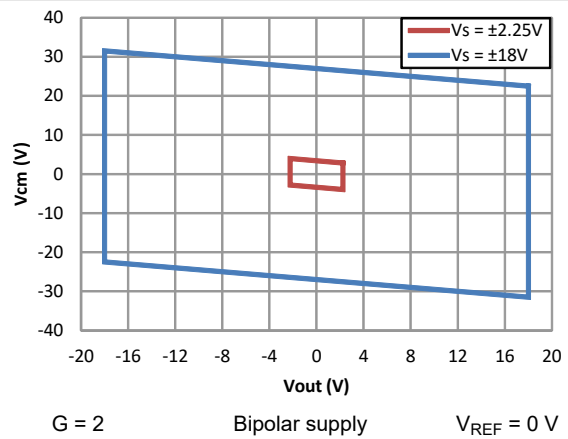


Figure 7-68. Input Common-Mode Voltage vs Output Voltage

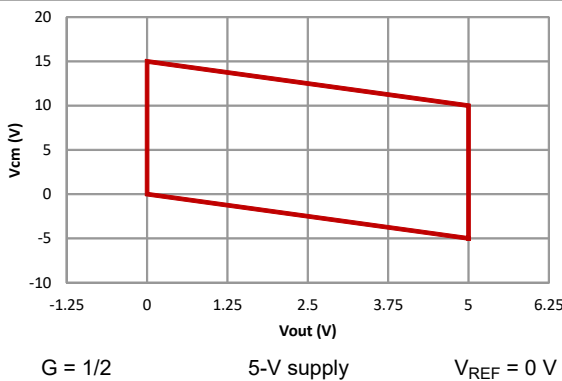


Figure 7-69. Input Common-Mode Voltage vs Output Voltage

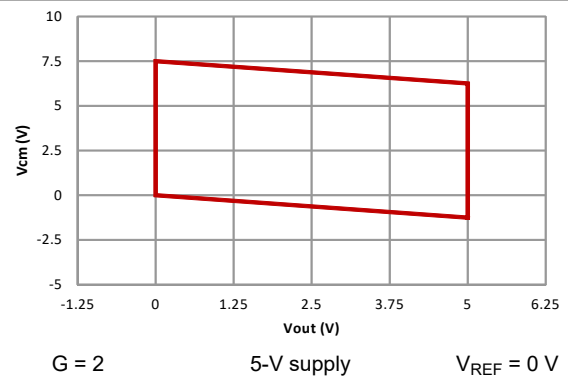


Figure 7-70. Input Common-Mode Voltage vs Output Voltage

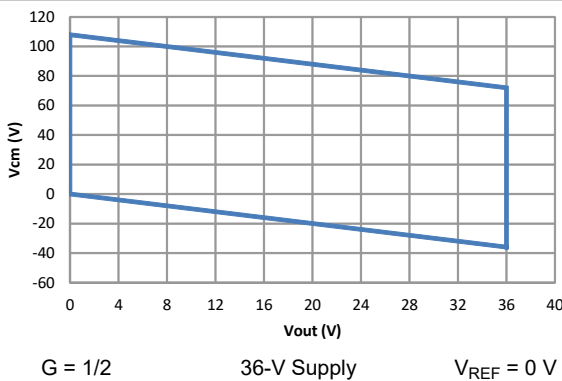


Figure 7-71. Input Common-Mode Voltage vs Output Voltage

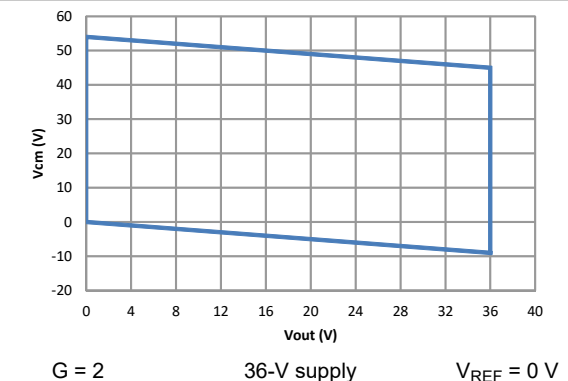


Figure 7-72. Input Common-Mode Voltage vs Output Voltage

7.7 Typical Characteristics (continued)

at $T_A = 25^\circ\text{C}$, $V_S = \pm 18\text{ V}$, $V_{CM} = V_{OUT} = V_S / 2$, $R_L = 10\text{ k}\Omega$, REF pin connected to ground, and $G = 1/2$ (unless otherwise noted)

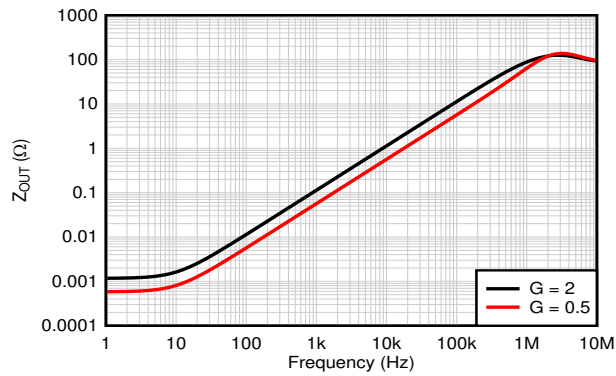


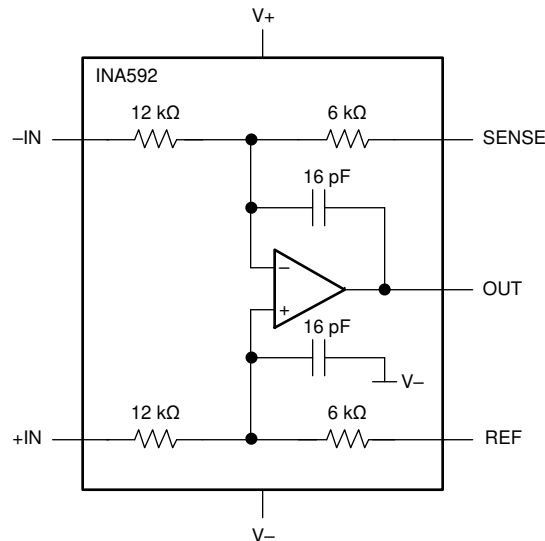
Figure 7-73. Closed-Loop Output Impedance vs Frequency

8 Detailed Description

8.1 Overview

The INA592 consists of a high precision, e-trim™ op amp and four trimmed resistors. These resistors can be connected to make a wide variety of amplifier configurations, including difference, noninverting, and inverting configurations. Using the on-chip resistors of the INA592 provides the designer with several advantages over a discrete design. The INA592 also includes internal compensation capacitors, as shown in [Section 8.2](#).

8.2 Functional Block Diagram



8.3 Feature Description

Much of the dc performance of op amp circuits depends on the accuracy of the surrounding resistors. The resistors on the INA592 are laid out to be tightly matched. The resistors of each part are matched on-chip and tested for their matching accuracy. As a result of this trimming and testing, the INA592 provides high accuracy for specifications such as gain drift, common-mode rejection, and gain error.

8.4 Device Functional Modes

The INA592 can measure voltages beyond the rails. For the $G = \frac{1}{2}$ and $G = 2$ difference amplifier configurations, see the input voltage range in [Section 7.5](#) and [Section 7.6](#) for details. The INA592 can be configured in several ways; see [Figure 9-5](#) to [Figure 9-9](#). These configurations rely on the internal, matched resistors; therefore all of these configurations have excellent gain accuracy and gain drift.

9 Application and Implementation

Note

Information in the following applications sections is not part of the TI component specification, and TI does not warrant its accuracy or completeness. TI's customers are responsible for determining suitability of components for their purposes, as well as validating and testing their design implementation to confirm system functionality.

9.1 Application Information

Figure 9-1 shows the basic connections required for operation of the INA592. Connect power supply bypass capacitors close to the device pins.

The differential input signal is connected to pins 2 and 3 as shown. The source impedances connected to the inputs must be nearly equal to provide good common-mode rejection. An 8-Ω mismatch in source impedance degrades the common-mode rejection of a typical device to approximately 80 dB. Gain accuracy is also slightly affected. If the source has a known impedance mismatch, use an additional resistor in series with one input to preserve good common-mode rejection.

9.2 Typical Applications

9.2.1 Basic Power Supply and Signal Connections

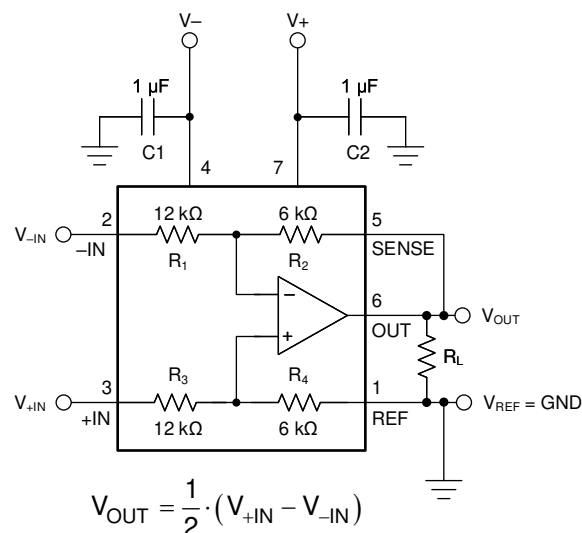


Figure 9-1. Basic Power Supply and Signal Connections

9.2.1.1 Design Requirements

For the application shown in Figure 9-1, the design requirements are:

- Gain of $G = \frac{1}{2}$
- Offset of output voltage $V_{out_{OS}} = 0 \text{ V}$

9.2.1.2 Detailed Design Procedure

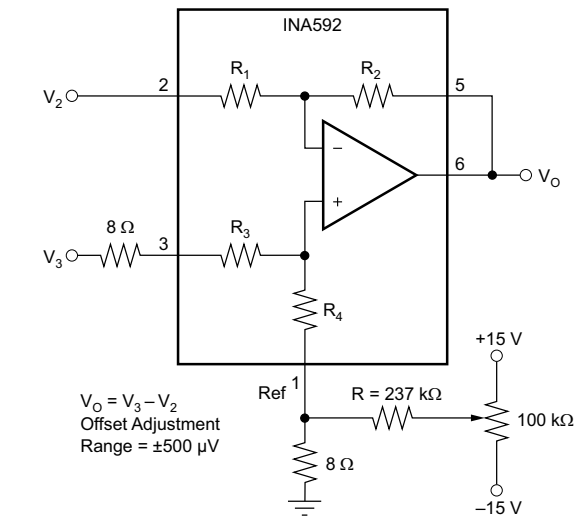
9.2.1.2.1 Operating Voltage

The INA592 operates from single (4.5 V to 36 V) or dual (± 2.25 V to ± 18 V) supplies with excellent performance. Specifications are production tested with 5-V and ± 15 -V supplies. Most behavior remains unchanged throughout the full operating voltage range. Parameters that vary significantly with operating voltage are shown in the [Section 7.7](#). The internal op amp in the INA592 is a single-supply design. This design allows linear operation with the op amp common-mode voltage equal to, or slightly less than V^- (or single-supply ground). Although input voltages on pins 2 and 3 that are less than the negative supply voltage do not damage the device, operation in this region is not recommended. Transient conditions at the inverting input terminal less than the negative supply can cause a positive feedback condition that could lock the device output to the negative rail.

The INA592 can accurately measure differential signals that are greater than the positive power supply. For example in $G = \frac{1}{2}$, the linear common-mode range extends to nearly three times the positive power-supply voltage; see the [Typical Characteristics](#) as well as [Section 9.2.1.2.3](#).

9.2.1.2.2 Offset Voltage Trim

The INA592 is production trimmed for low offset voltage and drift. Most applications require no external offset adjustment. [Figure 9-2](#) shows an optional circuit for trimming the output offset voltage. The output is referred to the output reference terminal (pin 1), which is normally grounded. A voltage applied to the REF pin is summed with the output signal. This summing operation can be used to null offset voltage. To maintain good common-mode rejection, the source impedance of a signal applied to the REF pin must be less than 8Ω . For low impedance at the REF pin, the trim voltage can be buffered with an op amp, such as the [OPA177](#).



NOTE: For $\pm 750 \mu\text{V}$ range, $R = 158 \text{ k}\Omega$.

Copyright © 2017, Texas Instruments Incorporated

Figure 9-2. Offset Adjustment

9.2.1.2.3 Input Voltage Range

The INA592 is able to measure input voltages beyond the supply rails. The internal resistors divide down the voltage before the voltage reaches the internal op amp, and provide protection to the op amp inputs. [Figure 9-3](#) shows an example of how the voltage division works in a difference-amplifier configuration. For the INA592 to measure correctly, the input voltages at the input nodes of the internal op amp must stay less than 0.1 V of the positive supply rail, and can exceed the negative supply rail by 0.1 V. See [Section 10](#) for more details.

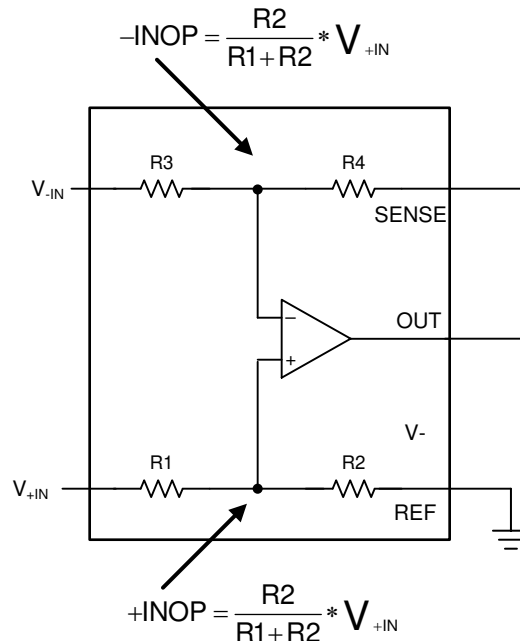


Figure 9-3. Voltage Division in the Difference Amplifier Configuration

The INA592 has integrated ESD diodes at the inputs that provide overvoltage protection. This feature simplifies system design by eliminating the need for additional external protection circuitry, and enables a more robust system. The voltages at any of the inputs of the devices in $G = \frac{1}{2}$ configuration with ± 18 -V supplies can safely range from $+V_S - 54$ V up to $-V_S + 54$ V. For example, on ± 10 -V supplies, input voltages can go as high as ± 30 V.

9.2.1.2.4 Capacitive Load Drive Capability

The INA592 can drive large capacitive loads, even at low supplies. The device is stable with a 500-pF load; see [Section 7.7](#).

9.2.1.3 Application Curve

The interaction between the output stage of an operational amplifier (op amp) and capacitive loads can impact the stability of the circuit. Throughout the industry, op-amp output-stage requirements have changed greatly since their original creation. Classic output stages with the class-AB, common-emitter, bipolar-junction transistor (BJT) have now been replaced with common-collector BJT and common-drain, complementary metal-oxide semiconductor (CMOS) devices. Both of these technologies enable rail-to-rail output voltages for single-supply and battery-powered applications. A result of changing these output-stage structures is that the op-amp open-loop output impedance (Z_O) changed from the largely resistive behavior of early BJT op amps to a frequency-dependent Z_O that features capacitive, resistive, and inductive portions. Proper understanding of Z_O over frequency, and also the resulting closed-loop output impedance over frequency, is crucial for the understanding of loop-gain, bandwidth, and stability analysis. Figure 9-4 shows how the INA592 closed-loop output impedance varies over frequency.

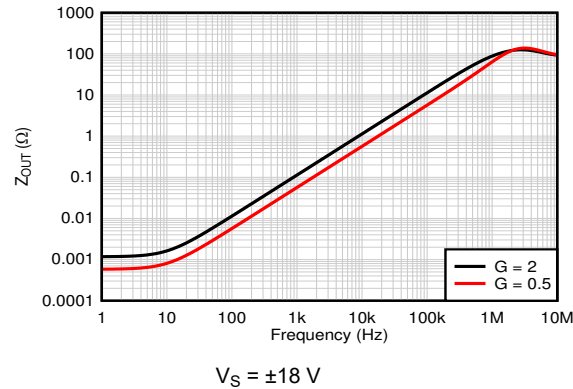
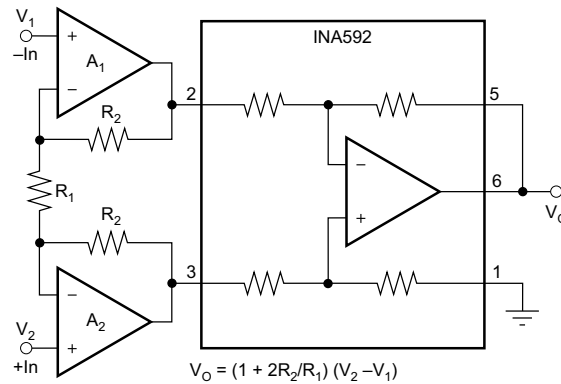


Figure 9-4. Closed-Loop Output Impedance vs Frequency

9.2.2 Additional Applications

The INA592 can be combined with op amps to form a complete instrumentation amplifier with specialized performance characteristics, as shown in Figure 9-5.



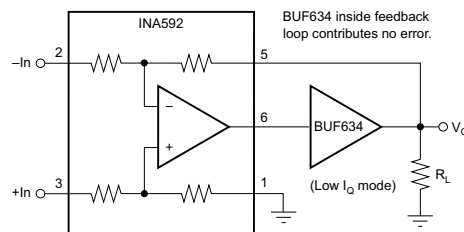
Copyright © 2017, Texas Instruments Incorporated

Figure 9-5. Precision Instrumentation Amplifier

Texas Instruments offers many complete high-performance instrumentation amplifiers (IAs). See Table 9-1 for some of the products with related performance.

Table 9-1. Recommended Products to Use With the INA592

A1, A2	FEATURE	SIMILAR TI IA
OPA27	Low noise	INA103
OPA129	Ultra-low bias current (fA)	INA116
OPA177	Low offset drift, low noise	INA114 , INA128
OPA2130	Low power, FET-input (pA)	INA111
OPA2234	Single supply, precision, low power	INA122 , INA118
OPA2237	Single supply, low power, 8-pin MSOP	INA122 , INA126



Copyright © 2017, Texas Instruments Incorporated

Figure 9-6. Low Power, High-Output Current Precision Difference Amplifier

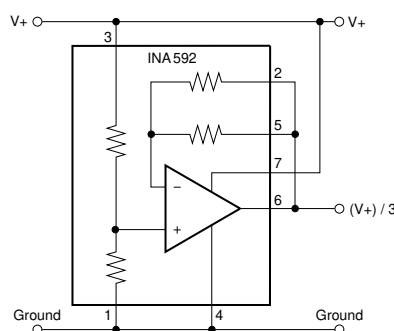


Figure 9-7. Pseudoground Generator

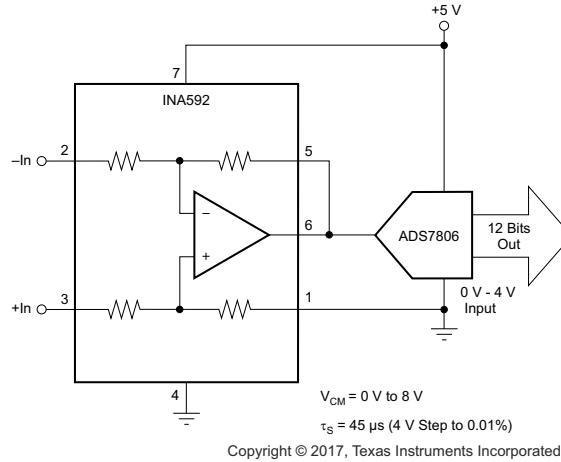


Figure 9-8. Differential Input Data Acquisition

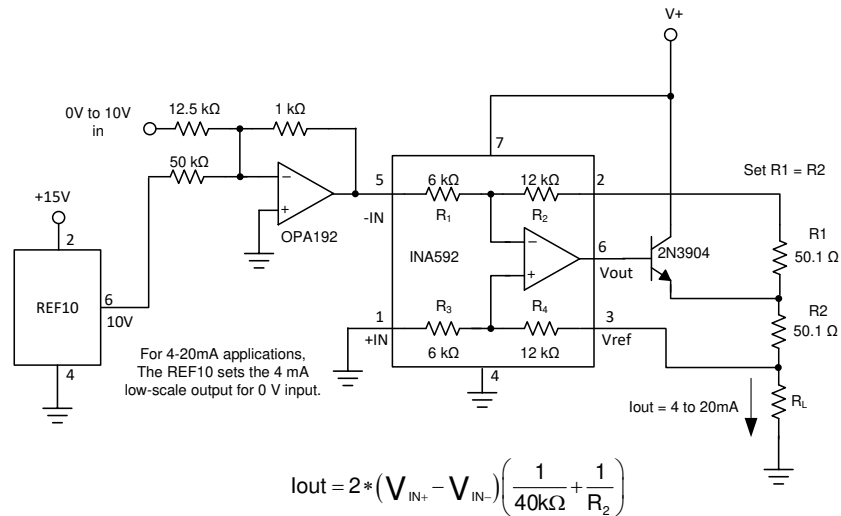


Figure 9-9. Precision Voltage-to-Current Conversion

The difference amplifier is a highly versatile building block that is useful in a wide variety of applications. See the [INA105 data sheet](#) for additional applications ideas, including:

- Current receiver with compliance to rails
- Precision unity-gain inverting amplifier
- ± 10 -V precision voltage reference
- ± 5 -V precision voltage reference
- Precision unity-gain buffer
- Precision average value amplifier
- Precision $G = 2$ amplifier
- Precision summing amplifier
- Precision $G = 1/2$ amplifier
- Precision bipolar offsetting
- Precision summing amplifier with gain
- Instrumentation amplifier guard drive generator
- Precision summing instrumentation amplifier
- Precision absolute value buffer
- Precision voltage-to-current converter with differential inputs
- Differential input voltage-to-current converter for low IOUT
- Isolating current source
- Differential output difference amplifier
- Isolating current source with buffering amplifier for greater accuracy
- Window comparator with window span and window center inputs
- Precision voltage-controlled current source with buffered differential inputs and gain
- Digitally controlled gain of ± 1 amplifier

10 Power Supply Recommendations

The nominal performance of the INA592 is specified with a supply voltage of ± 15 V and midsupply reference voltage. The device operates using power supplies from ± 2.25 V (4.5 V) to ± 18 V (36 V) and non midsupply reference voltages with excellent performance. Parameters that can vary significantly with operating voltage and reference voltage are shown in [Section 7.7](#).

11 Layout

11.1 Layout Guidelines

Attention to good layout practices is always recommended. For best operational performance of the device, use good PCB layout practices, including:

- Make sure that both input paths are well-matched for source impedance and capacitance to avoid converting common-mode signals into differential signals.
- Noise propagates into analog circuitry through the power pins of the circuit as a whole and of the device. Bypass capacitors reduce the coupled noise by providing low-impedance power sources local to the analog circuitry.
 - Connect low-ESR, 0.1- μ F ceramic bypass capacitors between each supply pin and ground, placed as close to the device as possible. A single bypass capacitor from V+ to ground is applicable for single-supply applications.
- To reduce parasitic coupling, run the input traces as far away from the supply or output traces as possible. If these traces cannot be kept separate, crossing the sensitive trace perpendicular is much better than in parallel with the noisy trace.
- Place the external components as close to the device as possible.
- Keep the traces as short as possible.

11.2 Layout Example

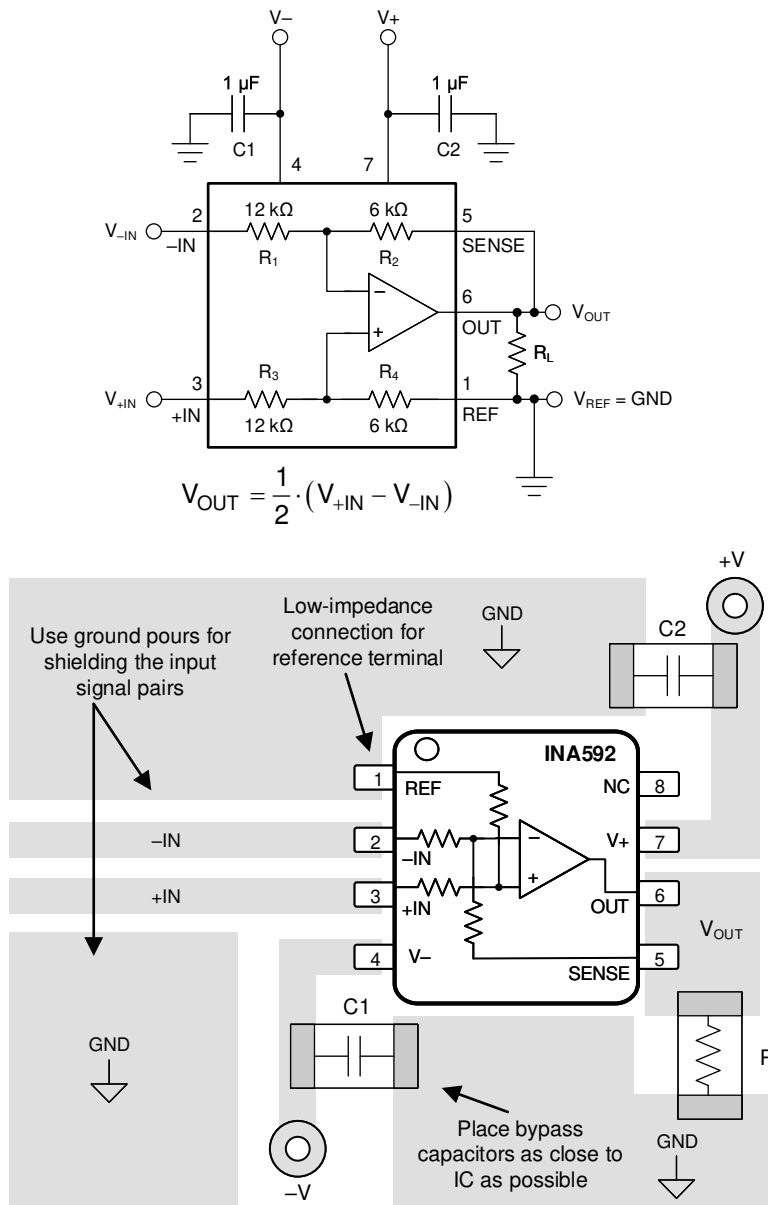


Figure 11-1. Example Schematic and Associated PCB Layout for SOIC and VSSOP Packages

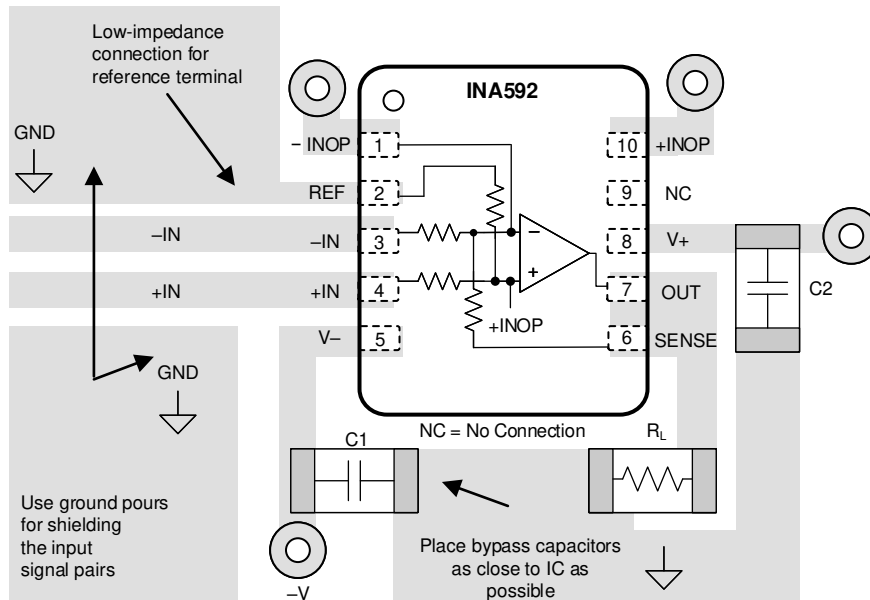
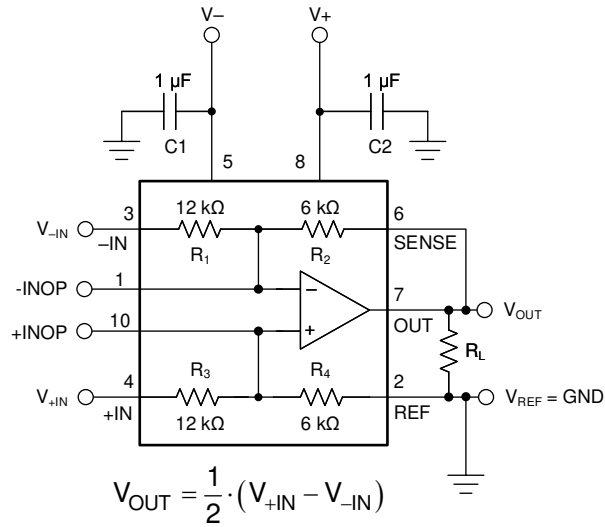


Figure 11-2. Example Schematic and Associated PCB Layout for VSON Package

12 Device and Documentation Support

12.1 Documentation Support

12.1.1 Related Documentation

For related documentation see the following:

- Texas Instruments, [Universal Difference Amplifier Evaluation Module user's guide](#)
- Texas Instruments, [Precision Signal-Conditioning Solutions for Motor-Control Position Feedback technical brief](#)

12.2 Receiving Notification of Documentation Updates

To receive notification of documentation updates, navigate to the device product folder on ti.com. Click on *Subscribe to updates* to register and receive a weekly digest of any product information that has changed. For change details, review the revision history included in any revised document.

12.3 Support Resources

[TI E2E™ support forums](#) are an engineer's go-to source for fast, verified answers and design help — straight from the experts. Search existing answers or ask your own question to get the quick design help you need.

Linked content is provided "AS IS" by the respective contributors. They do not constitute TI specifications and do not necessarily reflect TI's views; see TI's [Terms of Use](#).

12.4 Trademarks

e-trim™ and TI E2E™ are trademarks of Texas Instruments.
All trademarks are the property of their respective owners.

12.5 Electrostatic Discharge Caution



This integrated circuit can be damaged by ESD. Texas Instruments recommends that all integrated circuits be handled with appropriate precautions. Failure to observe proper handling and installation procedures can cause damage.

ESD damage can range from subtle performance degradation to complete device failure. Precision integrated circuits may be more susceptible to damage because very small parametric changes could cause the device not to meet its published specifications.

12.6 Glossary

[TI Glossary](#) This glossary lists and explains terms, acronyms, and definitions.

13 Mechanical, Packaging, and Orderable Information

The following pages include mechanical, packaging, and orderable information. This information is the most current data available for the designated devices. This data is subject to change without notice and revision of this document. For browser-based versions of this data sheet, refer to the left-hand navigation.

PACKAGING INFORMATION

Orderable Device	Status (1)	Package Type	Package Drawing	Pins	Package Qty	Eco Plan (2)	Lead finish/ Ball material (6)	MSL Peak Temp (3)	Op Temp (°C)	Device Marking (4/5)	Samples
INA592IDGKR	ACTIVE	VSSOP	DGK	8	2500	RoHS & Green	NIPDAUAG SN	Level-2-260C-1 YEAR	-40 to 125	1OK6	Samples
INA592IDGKT	ACTIVE	VSSOP	DGK	8	250	RoHS & Green	NIPDAUAG SN	Level-2-260C-1 YEAR	-40 to 125	1OK6	Samples
INA592IDR	ACTIVE	SOIC	D	8	3000	RoHS & Green	NIPDAU	Level-2-260C-1 YEAR	-40 to 125	INA592	Samples
INA592IDRCR	ACTIVE	VSON	DRC	10	3000	RoHS & Green	NIPDAU	Level-1-260C-UNLIM	-40 to 125	IN592	Samples
INA592IDRCT	ACTIVE	VSON	DRC	10	250	RoHS & Green	NIPDAU	Level-1-260C-UNLIM	-40 to 125	IN592	Samples
INA592IDT	ACTIVE	SOIC	D	8	250	RoHS & Green	NIPDAU	Level-2-260C-1 YEAR	-40 to 125	INA592	Samples

(1) The marketing status values are defined as follows:

ACTIVE: Product device recommended for new designs.

LIFEBUY: TI has announced that the device will be discontinued, and a lifetime-buy period is in effect.

NRND: Not recommended for new designs. Device is in production to support existing customers, but TI does not recommend using this part in a new design.

PREVIEW: Device has been announced but is not in production. Samples may or may not be available.

OBSELETE: TI has discontinued the production of the device.

(2) **RoHS:** TI defines "RoHS" to mean semiconductor products that are compliant with the current EU RoHS requirements for all 10 RoHS substances, including the requirement that RoHS substance do not exceed 0.1% by weight in homogeneous materials. Where designed to be soldered at high temperatures, "RoHS" products are suitable for use in specified lead-free processes. TI may reference these types of products as "Pb-Free".

RoHS Exempt: TI defines "RoHS Exempt" to mean products that contain lead but are compliant with EU RoHS pursuant to a specific EU RoHS exemption.

Green: TI defines "Green" to mean the content of Chlorine (Cl) and Bromine (Br) based flame retardants meet JS709B low halogen requirements of <=1000ppm threshold. Antimony trioxide based flame retardants must also meet the <=1000ppm threshold requirement.

(3) MSL, Peak Temp. - The Moisture Sensitivity Level rating according to the JEDEC industry standard classifications, and peak solder temperature.

(4) There may be additional marking, which relates to the logo, the lot trace code information, or the environmental category on the device.

(5) Multiple Device Markings will be inside parentheses. Only one Device Marking contained in parentheses and separated by a "-" will appear on a device. If a line is indented then it is a continuation of the previous line and the two combined represent the entire Device Marking for that device.

(6) Lead finish/Ball material - Orderable Devices may have multiple material finish options. Finish options are separated by a vertical ruled line. Lead finish/Ball material values may wrap to two lines if the finish value exceeds the maximum column width.

Important Information and Disclaimer: The information provided on this page represents TI's knowledge and belief as of the date that it is provided. TI bases its knowledge and belief on information provided by third parties, and makes no representation or warranty as to the accuracy of such information. Efforts are underway to better integrate information from third parties. TI has taken and continues to take reasonable steps to provide representative and accurate information but may not have conducted destructive testing or chemical analysis on incoming materials and chemicals. TI and TI suppliers consider certain information to be proprietary, and thus CAS numbers and other limited information may not be available for release.

In no event shall TI's liability arising out of such information exceed the total purchase price of the TI part(s) at issue in this document sold by TI to Customer on an annual basis.

TAPE AND REEL INFORMATION



QUADRANT ASSIGNMENTS FOR PIN 1 ORIENTATION IN TAPE



*All dimensions are nominal

Device	Package Type	Package Drawing	Pins	SPQ	Reel Diameter (mm)	Reel Width W1 (mm)	A0 (mm)	B0 (mm)	K0 (mm)	P1 (mm)	W (mm)	Pin1 Quadrant
INA592IDGKR	VSSOP	DGK	8	2500	330.0	12.4	5.3	3.4	1.4	8.0	12.0	Q1
INA592IDGKT	VSSOP	DGK	8	250	330.0	12.4	5.3	3.4	1.4	8.0	12.0	Q1
INA592IDR	SOIC	D	8	3000	330.0	12.4	6.4	5.2	2.1	8.0	12.0	Q1
INA592IDRCR	VSON	DRC	10	3000	330.0	12.4	3.3	3.3	1.1	8.0	12.0	Q2
INA592IDRCT	VSON	DRC	10	250	180.0	12.4	3.3	3.3	1.1	8.0	12.0	Q2
INA592IDT	SOIC	D	8	250	180.0	12.4	6.4	5.2	2.1	8.0	12.0	Q1

TAPE AND REEL BOX DIMENSIONS


*All dimensions are nominal

Device	Package Type	Package Drawing	Pins	SPQ	Length (mm)	Width (mm)	Height (mm)
INA592IDGKR	VSSOP	DGK	8	2500	366.0	364.0	50.0
INA592IDGKT	VSSOP	DGK	8	250	366.0	364.0	50.0
INA592IDR	SOIC	D	8	3000	356.0	356.0	35.0
INA592IDRCR	VSON	DRC	10	3000	367.0	367.0	35.0
INA592IDRCT	VSON	DRC	10	250	210.0	185.0	35.0
INA592IDT	SOIC	D	8	250	210.0	185.0	35.0



D0008A

PACKAGE OUTLINE

SOIC - 1.75 mm max height

SMALL OUTLINE INTEGRATED CIRCUIT



4214825/C 02/2019

NOTES:

- Linear dimensions are in inches [millimeters]. Dimensions in parenthesis are for reference only. Controlling dimensions are in inches. Dimensioning and tolerancing per ASME Y14.5M.
- This drawing is subject to change without notice.
- This dimension does not include mold flash, protrusions, or gate burrs. Mold flash, protrusions, or gate burrs shall not exceed .006 [0.15] per side.
- This dimension does not include interlead flash.
- Reference JEDEC registration MS-012, variation AA.

EXAMPLE BOARD LAYOUT

D0008A

SOIC - 1.75 mm max height

SMALL OUTLINE INTEGRATED CIRCUIT



LAND PATTERN EXAMPLE
 EXPOSED METAL SHOWN
 SCALE:8X



SOLDER MASK DETAILS

4214825/C 02/2019

NOTES: (continued)

- 6. Publication IPC-7351 may have alternate designs.
- 7. Solder mask tolerances between and around signal pads can vary based on board fabrication site.

EXAMPLE STENCIL DESIGN

D0008A

SOIC - 1.75 mm max height

SMALL OUTLINE INTEGRATED CIRCUIT

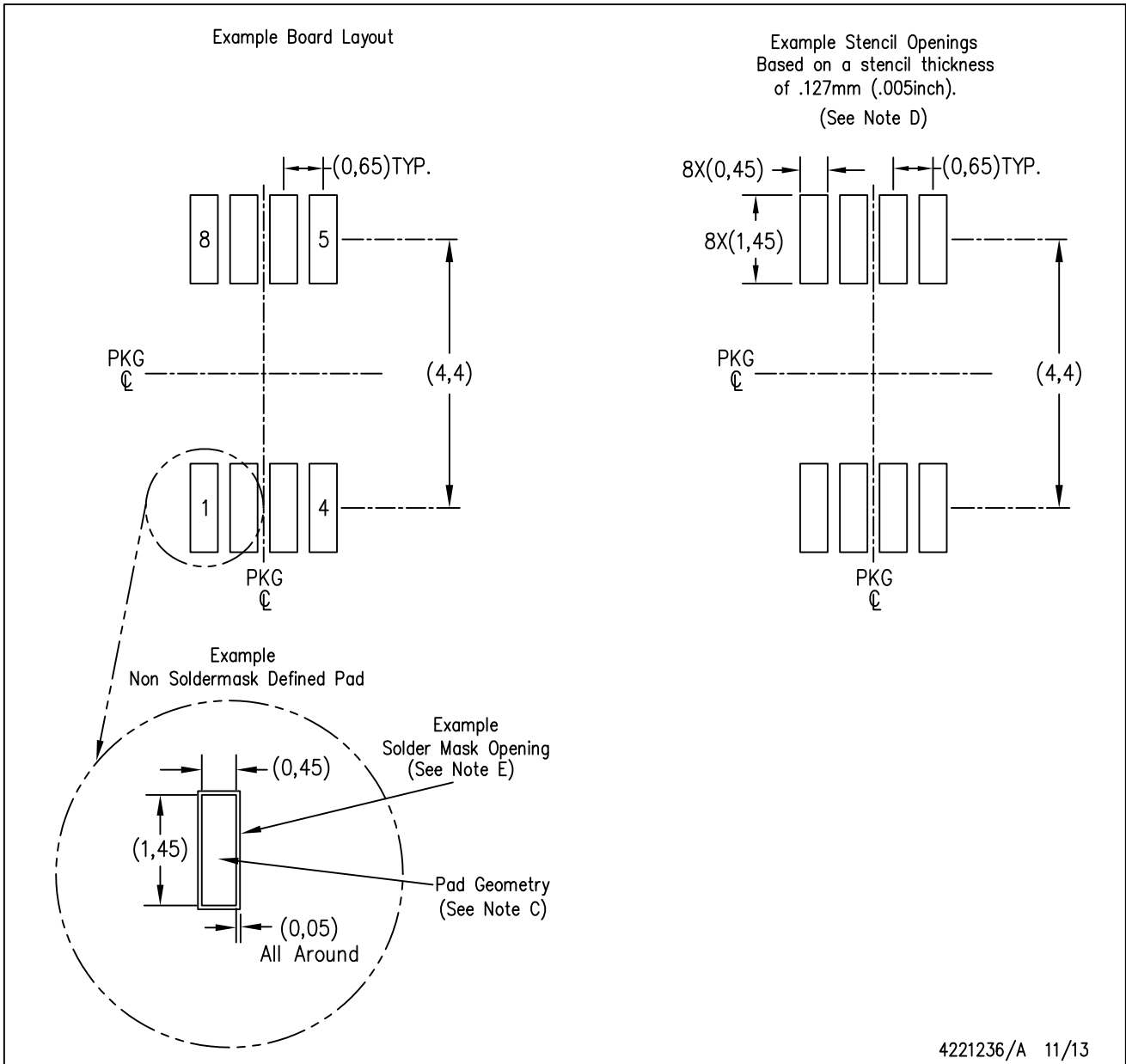


SOLDER PASTE EXAMPLE
BASED ON .005 INCH [0.125 MM] THICK STENCIL
SCALE:8X

4214825/C 02/2019

NOTES: (continued)

8. Laser cutting apertures with trapezoidal walls and rounded corners may offer better paste release. IPC-7525 may have alternate design recommendations.
9. Board assembly site may have different recommendations for stencil design.



- NOTES:
- A. All linear dimensions are in millimeters.
 - B. This drawing is subject to change without notice.
 - C. Publication IPC-7351 is recommended for alternate designs.
 - D. Laser cutting apertures with trapezoidal walls and also rounding corners will offer better paste release. Customers should contact their board assembly site for stencil design recommendations. Refer to IPC-7525 for other stencil recommendations.
 - E. Customers should contact their board fabrication site for solder mask tolerances between and around signal pads.

GENERIC PACKAGE VIEW

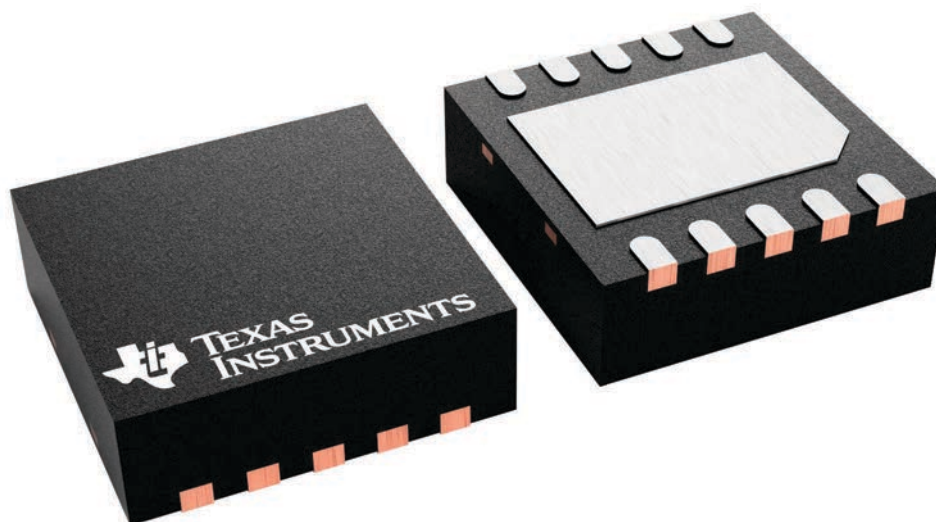
DRC 10

VSON - 1 mm max height

3 x 3, 0.5 mm pitch

PLASTIC SMALL OUTLINE - NO LEAD

This image is a representation of the package family, actual package may vary.
Refer to the product data sheet for package details.



4226193/A

EXAMPLE BOARD LAYOUT

DRC0010J

VSON - 1 mm max height

PLASTIC SMALL OUTLINE - NO LEAD



LAND PATTERN EXAMPLE
EXPOSED METAL SHOWN
SCALE:20X



SOLDER MASK DETAILS

4218878/B 07/2018

NOTES: (continued)

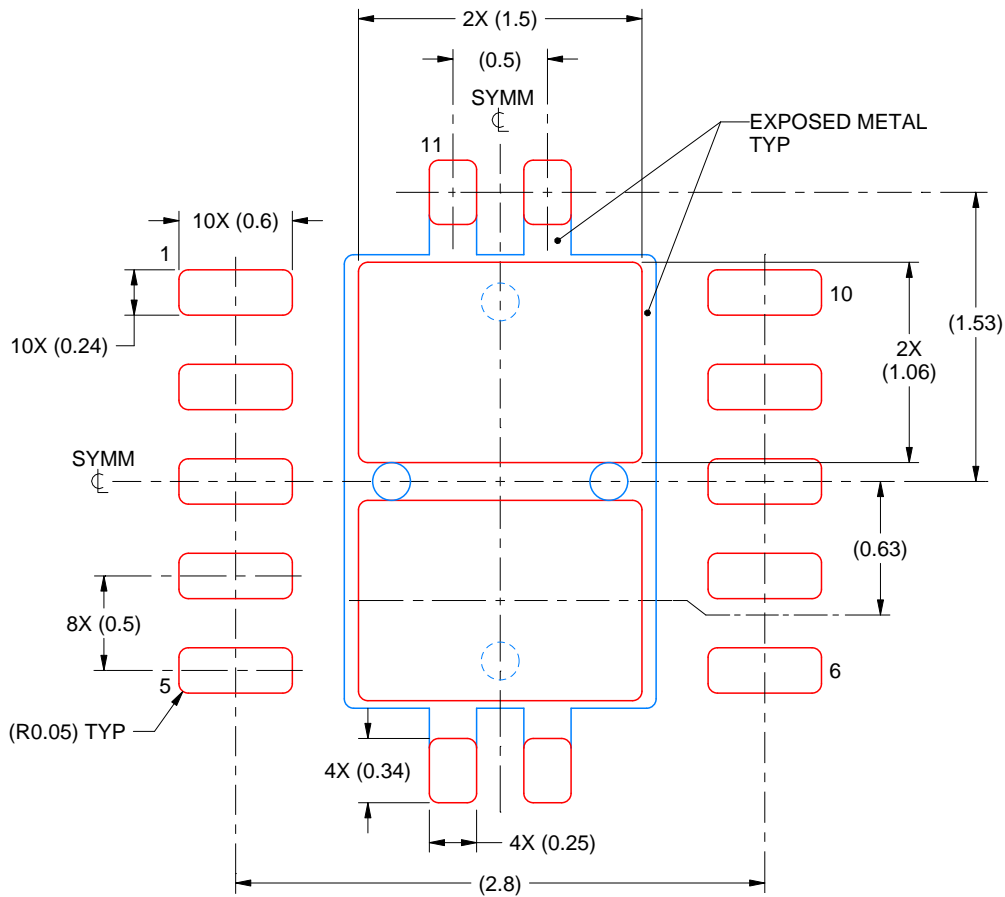
4. This package is designed to be soldered to a thermal pad on the board. For more information, see Texas Instruments literature number SLUA271 (www.ti.com/lit/sluea271).
5. Vias are optional depending on application, refer to device data sheet. If any vias are implemented, refer to their locations shown on this view. It is recommended that vias under paste be filled, plugged or tented.

EXAMPLE STENCIL DESIGN

DRC0010J

VSON - 1 mm max height

PLASTIC SMALL OUTLINE - NO LEAD



SOLDER PASTE EXAMPLE
BASED ON 0.125 mm THICK STENCIL

EXPOSED PAD 11:
80% PRINTED SOLDER COVERAGE BY AREA
SCALE:25X

4218878/B 07/2018

NOTES: (continued)

6. Laser cutting apertures with trapezoidal walls and rounded corners may offer better paste release. IPC-7525 may have alternate design recommendations.

IMPORTANT NOTICE AND DISCLAIMER

TI PROVIDES TECHNICAL AND RELIABILITY DATA (INCLUDING DATA SHEETS), DESIGN RESOURCES (INCLUDING REFERENCE DESIGNS), APPLICATION OR OTHER DESIGN ADVICE, WEB TOOLS, SAFETY INFORMATION, AND OTHER RESOURCES "AS IS" AND WITH ALL FAULTS, AND DISCLAIMS ALL WARRANTIES, EXPRESS AND IMPLIED, INCLUDING WITHOUT LIMITATION ANY IMPLIED WARRANTIES OF MERCHANTABILITY, FITNESS FOR A PARTICULAR PURPOSE OR NON-INFRINGEMENT OF THIRD PARTY INTELLECTUAL PROPERTY RIGHTS.

These resources are intended for skilled developers designing with TI products. You are solely responsible for (1) selecting the appropriate TI products for your application, (2) designing, validating and testing your application, and (3) ensuring your application meets applicable standards, and any other safety, security, regulatory or other requirements.

These resources are subject to change without notice. TI grants you permission to use these resources only for development of an application that uses the TI products described in the resource. Other reproduction and display of these resources is prohibited. No license is granted to any other TI intellectual property right or to any third party intellectual property right. TI disclaims responsibility for, and you will fully indemnify TI and its representatives against, any claims, damages, costs, losses, and liabilities arising out of your use of these resources.

TI's products are provided subject to [TI's Terms of Sale](#) or other applicable terms available either on [ti.com](https://www.ti.com) or provided in conjunction with such TI products. TI's provision of these resources does not expand or otherwise alter TI's applicable warranties or warranty disclaimers for TI products.

TI objects to and rejects any additional or different terms you may have proposed.

Mailing Address: Texas Instruments, Post Office Box 655303, Dallas, Texas 75265
Copyright © 2023, Texas Instruments Incorporated